

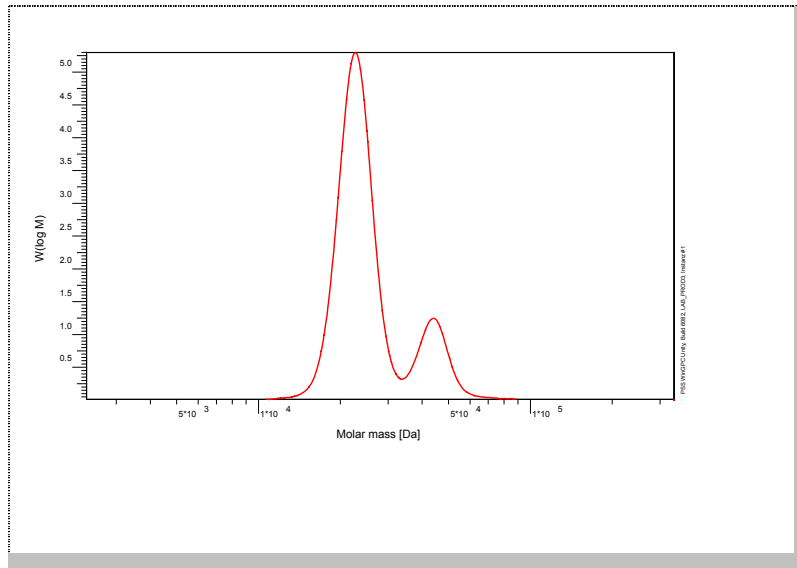
Certificate of Analysis

Polymer type: Poly(styrene-b-2-vinylpyridine)

Part No: PSS-psvp27k

Lot No: pspvp250108

Molar Mass Distribution



GPC/SEC – Conditions

Sample concentration	1,00 g/l	Inject volume	20 µl
Solvent	THF, Diethylaminoethylamin 0.1Vol%	Flow rate	1.00 ml/min
Temperature	23 °C		
Precolumn [8 x 50 mm]	PSS SDV 5µm		
Columns [analytical, each 8 x 300 mm]	PSS SDV 5µm 10e3Å / 10e5Å / 10e6Å		
Data Acquisition Software	PSS WinGPC	Operator	K.Oleschko

GPC/SEC – Results*

Detector	Mw (total) [Da]	Mn (total) [Da]	Mp (total) [Da]	PDI (total) [Mw/Mn]
Agilent RID	26 600	24 400	22 600	1.09

* GPC/SEC – Results based on Poly(styrene) calibration

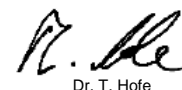
Copolymer - Composition	[w %]
Poly(styrene)	90
Poly(2-vinylpyridine)	10

Note:
Mw = Weight Average Molecular Weight
Mn = Number Average Molecular Weight
Mp = Molar Mass at the Peak Maximum
PDI = Polydispersity Index

Storage: Store the tightly recapped polymer standard in a dry, dark, cool area; e.g. a refrigerator (4 °C).

Date of expiry: See product label.

Manufacture and control according to PSS method of analysis



Dr. T. Hofe
production director

