

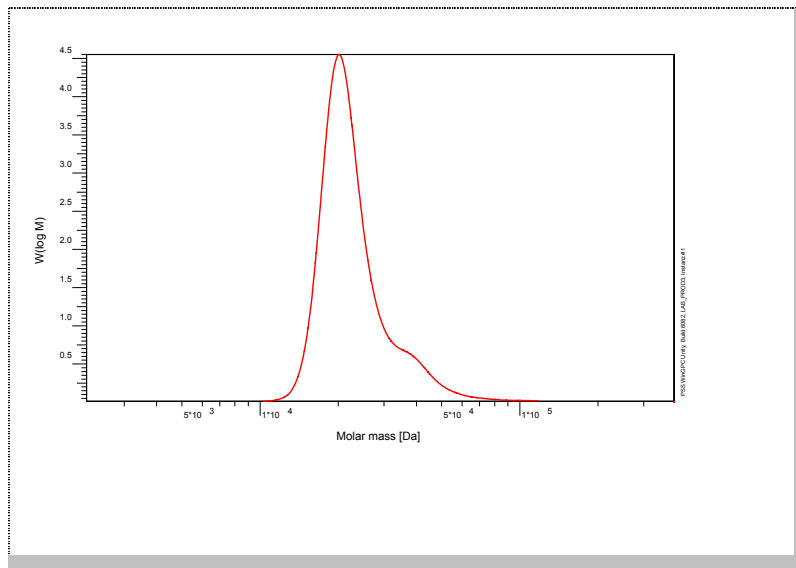
Certificate of Analysis

Polymer type: Poly(styrene-b-2-vinylpyridine)

Part No: PSS-psvp24k

Lot No: pspvp300108

Molar Mass Distribution



GPC/SEC – Conditions

| | | | |
|---------------------------------------|------------------------------------|---------------|-------------|
| Sample concentration | 1,00 g/l | Inject volume | 20 µl |
| Solvent | THF, Diethylaminoethylamin 0.1Vol% | Flow rate | 1.00 ml/min |
| Temperature | 23 °C | | |
| Precolumn [8 x 50 mm] | PSS SDV 5µm | | |
| Columns [analytical, each 8 x 300 mm] | PSS SDV 5µm 10e3Å / 10e5Å / 10e6Å | | |
| Data Acquisition Software | PSS WinGPC | Operator | K.Oleschko |

GPC/SEC – Results*

| Detector | Mw (total) [Da] | Mn (total) [Da] | Mp (total) [Da] | PDI (total) [Mw/Mn] |
|-------------|-----------------|-----------------|-----------------|---------------------|
| Agilent RID | 23 700 | 21 800 | 20 100 | 1.09 |

* GPC/SEC – Results based on Poly(styrene) calibration

| Copolymer - Composition | [w %] |
|-------------------------|-------|
| Poly(styrene) | 90 |
| Poly(2-vinylpyridine) | 10 |

Note:

Mw = Weight Average Molecular Weight
Mn = Number Average Molecular Weight
Mp = Molar Mass at the Peak Maximum
PDI = Polydispersity Index

Storage: Store the tightly recapped polymer standard in a dry, dark, cool area; e.g. a refrigerator (4 °C).

Date of expiry: See product label.

Manufacture and control according to PSS method of analysis



Dr. T. Hofe
production director

