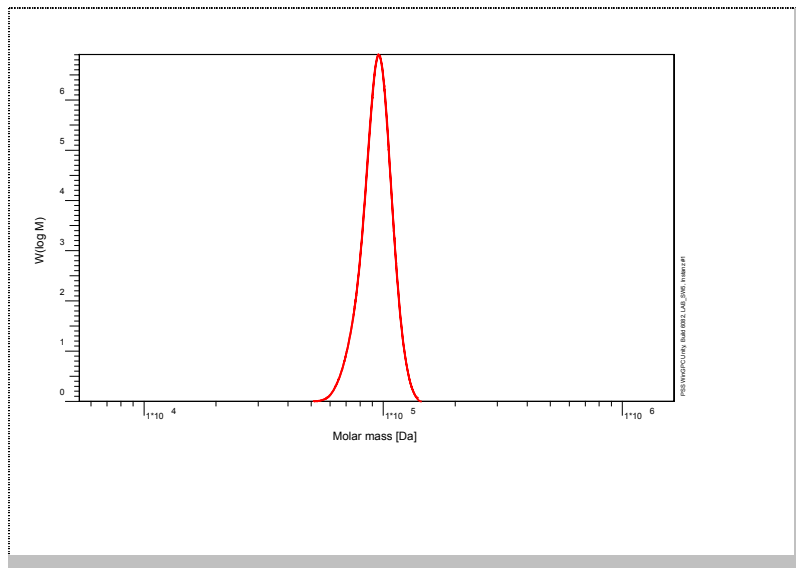


Certificate of Analysis

Polymer type: Poly(styrene-b-2-vinylpyridine-b-t-butyl methacrylate)
 Part No: PSS-psvptbma95k
 Lot No: pspvptbma300709

Molar Mass Distribution



GPC/SEC – Conditions

Sample concentration	1,00 g/l	Inject volume	20 µl
Solvent	THF	Flow rate	1.00 ml/min
Temperature	23° C		
Columns [analytical, each 8 x 300 mm]	PSS SDV 5µm 10e3Å / 10e5Å / 10e6Å		
Data Acquisition Software	PSS WinGPC	Operator	K. Oleschko

GPC/SEC – Results*

Detector	Mw (total) [Da]	Mn (total) [Da]	Mp (total) [Da]	PDI (total) [Mw/Mn]
Agilent RID	94 700	92 800	95 900	1.02

* GPC/SEC – Results based on Poly(styrene) calibration

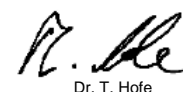
Copolymer - Composition	[w %]
Poly(styrene)	79
Poly(2-vinylpyridine)	4
Poly(t-butyl methacrylate)	17

Note:
 Mw = Weight Average Molecular Weight
 Mn = Number Average Molecular Weight
 Mp = Molar Mass at the Peak Maximum
 PDI = Polydispersity Index

Storage: Store the tightly recapped polymer standard in a dry, dark, cool area; e.g. a refrigerator (4 °C).

Date of expiry: See product label.

Manufacture and control according to PSS method of analysis



Dr. T. Hofe
production director

