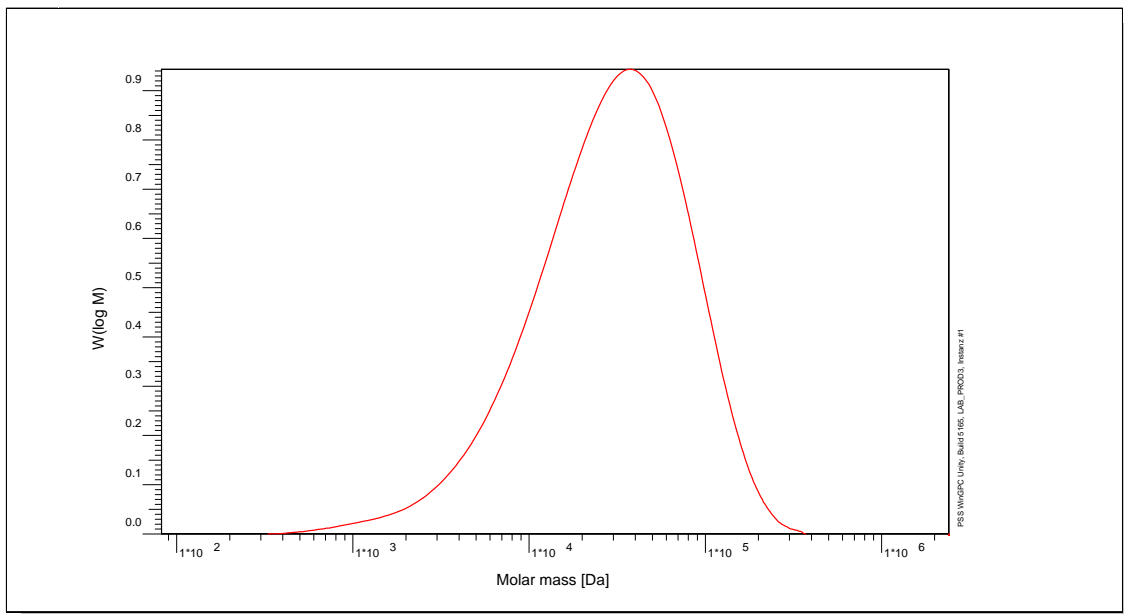


Certificate of Analysis

Polymer type: Poly(vinyl alcohol) broad
 Part No: PSS-pvo40k
 Lot No: pvo4129

Molar Mass Distribution



GPC/SEC - Conditions

Sample concentration	3,00 g/l	Inject volume	20 µl
Solvent	Sodium nitrate 0.1M, MeOH 20%	Flow rate	1,00 ml/min
Precolumn [8 x 50 mm]	PSS SUPREMA 10µm	Temperature	23,0° C
Columns [analytical, each 8 x 300 mm]	PSS SUPREMA 10µm linear M / linear M		
Data Acquisition Software	PSS WinGPC	Operator	T. Hofe

GPC/SEC - Results

Detector	Mw [Da]	Mn [Da]	Mp [Da]	PDI [Mw/Mn]
Shodex R-71	40500	20900	-	1,94

GPC/SEC - Results based on Poly(vinyl alcohol) broad calibration.

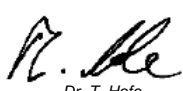
Note:

Mw = Weight average molecular weight
 Mn = Number average molecular weight
 Mp = Molar mass at the peak maximum
 PDI = Polydispersity Index

Storage: Store the tightly recapped polymer standard in a dry, dark, cool area; e.g. a refrigerator (4 °C).

Date of expiry: See product label.

Manufacture control according to PSS method of analysis


 Dr. T. Hofe
 production director

