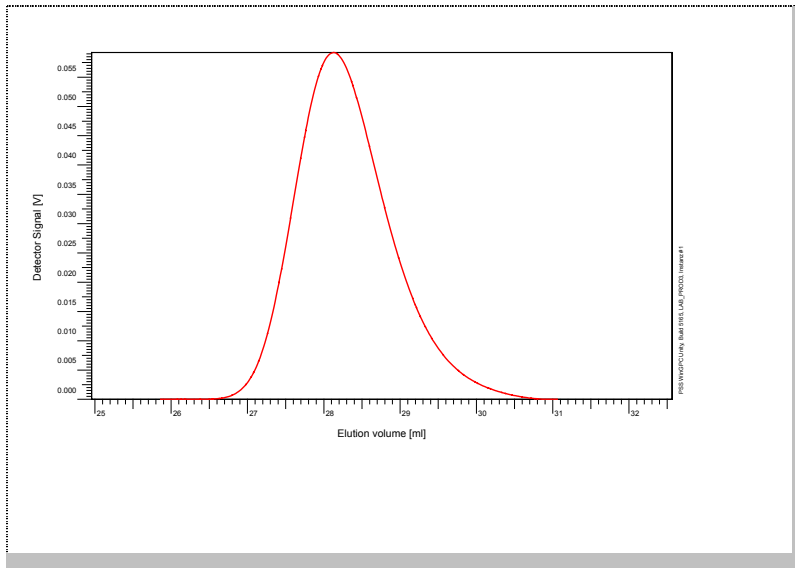


# Certificate of Analysis

Polymer type: Poly(alpha-methylstyrene-b-styrene-d8)  
 Part No: PSS-amspde3k  
 Lot No: ssd820068

## Elugramm



## GPC/SEC – Conditions

Sample concentration	1,00 g/l	Inject volume	20 µl
Solvent	Tetrahydrofuran	Flow rate	1.00 ml/min
Temperature	23 °C		
Precolumn [8 x 50 mm]	PSS SDV 5µm		
Columns [analytical, each 8 x 300 mm]	PSS SDV 5µm 10e3Å / 10e5Å / 10e6Å		
Data Acquisition Software	PSS WinGPC	Operator	R. Leinweber

## GPC/SEC – Results\*

Detector	Mw (total) [Da]	Mw (ams) [Da]	Mw (psd8) [Da]	PDI (total) [Mw/Mn]
Agilent RID	2 900	2 610	290	1.11

\* molar mass calculation based on monomer consumption

Copolymer - Composition	[w %]
Poly(alpha-methylstyrene)	-
Poly(styrene-d8)	-

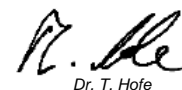
### Note:

Mw = Weight Average Molecular Weight  
 Mn = Number Average Molecular Weight  
 Mp = Molar Mass at the Peak Maximum  
 PDI = Polydispersity Index

**Storage:** Store the tightly recapped polymer standard in a dry, dark, cool area; e.g. a refrigerator (4 °C).

**Date of expiry:** See product label.

*Manufacture and control according to PSS method of analysis*



Dr. T. Hofe  
production director

