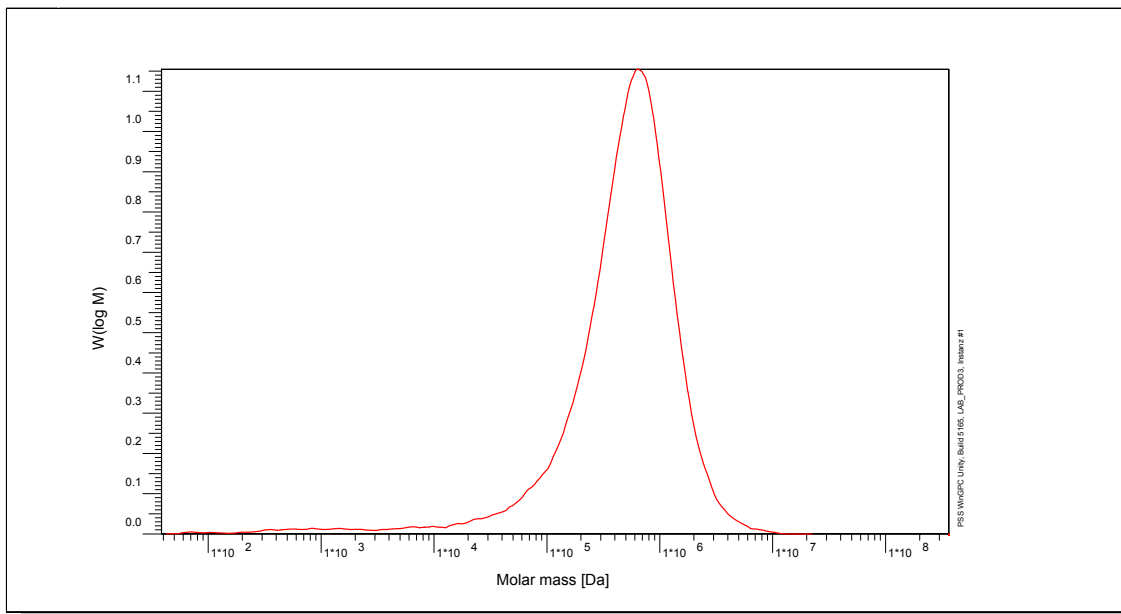


# Certificate of Analysis

Polymer type: Poly(2-vinylpyridinium bromide)  
 Part No: PSS-pvpq700k  
 Lot No: vpq30033n

## Molar Mass Distribution



## GPC/SEC - Conditions

Sample concentration	1,00 g/l	Inject volume	20 µl
Solvent	Formic acid 0.3M	Flow rate	1,00 ml/min
Precolumn [8 x 50 mm]	PSS NOVEMA 10µm	Temperature	25,0° C
Columns [analytical, each 8 x 300 mm]	PSS NOVEMA 10µm 3 000Å	Operator	R. Leinweber
Data Acquisition Software	PSS WinGPC		

## GPC/SEC - Results

Detector	Mw [Da]	Mn [Da]	Mp [Da]	PDI [Mw/Mn]
Shodex RI 71	697000	-	745000	< 1,30

Parent Poly(2-vinylpyridine) Molecular Weight: Mw [Da] = 262 000 Mn [Da] = 207 000 Mp [Da] = 280 000 PDI = 1.26

Molecular Weights are calculated with factor 2.66. (Factor 2.66 = M (pvpq) / M (pvp)).

**Note:**

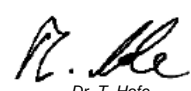
Mw = Weight average molecular weight  
 Mn = Number average molecular weight  
 Mp = Molar mass at the peak maximum  
 PDI = Polydispersity Index

Degree of quaternisation with benzylbromide > 98 % / M (pvp)

**Storage:** Store the tightly recapped polymer standard in a dry, dark, cool area; e.g. a refrigerator (4 °C).

**Date of expiry:** See product label.

Manufacture control according to PSS method of analysis

  
 Dr. T. Hofe  
 production director

