

**New**

## Light Scattering Detector SLD7000

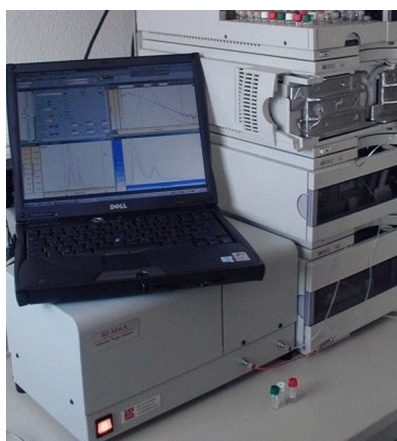


Multi angle light scattering detector for analysis of synthetic, natural and bio polymers.

- Determination of mol mass, radius of gyration and structure without assumptions and without calibration.
- Latest technology with fibre optics and ultra-sensitive CCD Chip allows highest sensitivity at lowest noise level.
- Index-matching make angle corrections unnecessary.
- Small cell volume minimizes band broadening and other artifacts
- No problem with lab space through optimized instrument dimensions.
- Complete integration into world wide used WinGPC Analysis Software

**New**

## Validated Software for Light Scattering

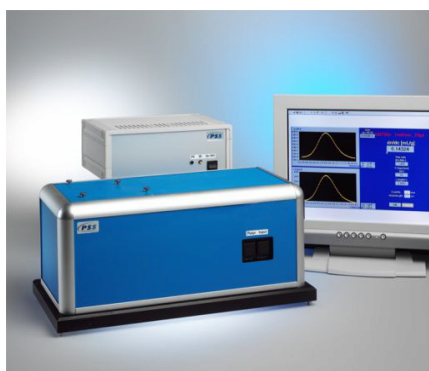


Measuring and analysis modul for WinGPC Software

- Fully incorporated DAWN und MiniDAWN with concentration detector as well as viscosity detectors for hyphenated polymer analysis.
- DIN, ASTM and ISO/EN conform 32-bit Software is compatible to all Windows applications.
- Worldwide seamless software handles all light scattering methods (LALLS, TALLS, RALLS, MALLS).
- Designed to run single and multiple GPC systems as well as with client/server networks.

**New**

## dn/dc determination with ScanRef



Interferometric Differential Refractometer SCR2000 determines concentration and specific refractive index increment dn/dc without calibration.

- No calibration required even when solvent has been changed.
- Absolut dn/dc-determination without reference materials.
- Interpolation of dn/dc-value to any wave length enables a much preciser polymer analysis with light scattering techniques (LS equation shows quadratic dependence).
- Even to use as an online RI detector for GPC.
- Easy to use Windows compatible measuring and analysis software.