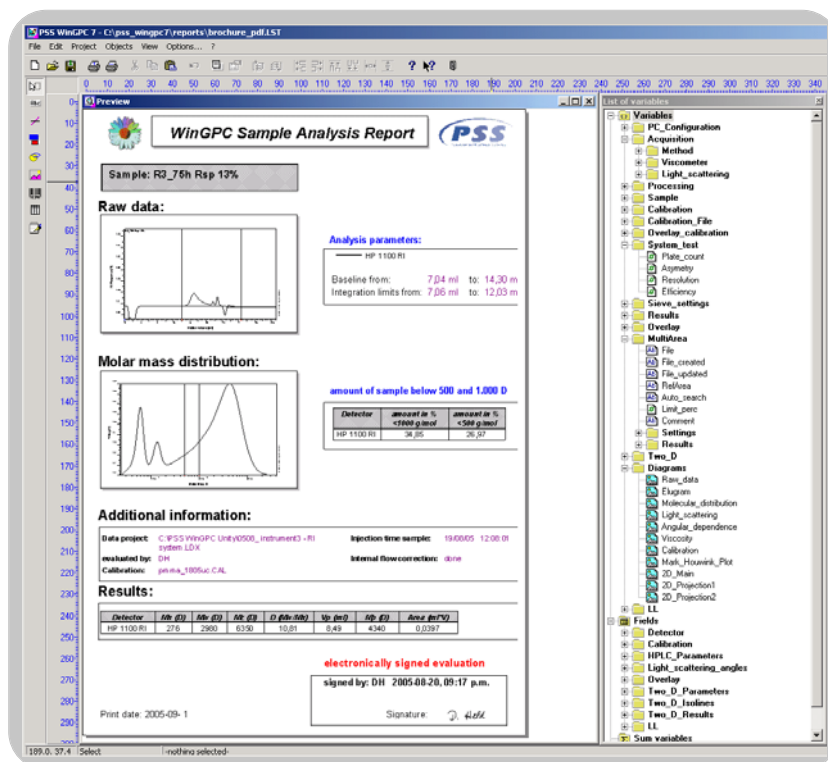




# WinGPC Unity Report Designer Software Module

Customize Powerful Reports and Share Information



## Flexible Reporting

WinGPC Unity offers reliable data recording and precise result calculation including automated report generation with WinGPC default reports. The WinGPC Unity Report Designer software module allows the user to create customized reports to meet individual needs. Dedicated layouts can be prepared for different customers, such as manufacturing QC, R&D, and external customers.

The Report Designer can not only incorporate company logos and company styles, but also add to workflow optimization. Powerful, if necessary paperless, result distribution and automatic user defined post-run calculations can help to reduce the amount of processing software in the lab. Performance criteria, set and verified automatically during printout, can timely alert users when specifications are not met, to save time and money. Custom comments and user specific information may be added, even during printing.

## Compatibility

The Report Designer is the ultimate tool for optimum output and performance, setting desktop publishing quality standards in industry.

Reports can be printed on any printer, Windows output device or published to pdf, jpeg or html. The Report Designer excels in the fast and simple distribution of analytical information via e-mail, LIM systems, Intranet and Extranet.

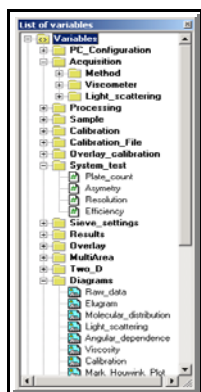
All WinGPC Unity options and software modules are supported by the Report Designer. Results of different modes (e.g. molar mass averages, light scattering evaluation, HPLC quantification or multi area analysis) can be combined on one report, consisting of one or more pages. The customized layouts can substitute the default WinGPC Unity reports, also during automatic evaluation or batch printing.

## Easy Design

The Report Designer tools enable the creation of custom individualized reports with the user's choice of parameters, results and figures.

Creating a new report is a breeze.

The Report Designer offers a list of all WinGPC Unity graphics, results and parameters. This content is implemented by a simple drag & drop. Variables, custom text, tables, graphics, etc., are

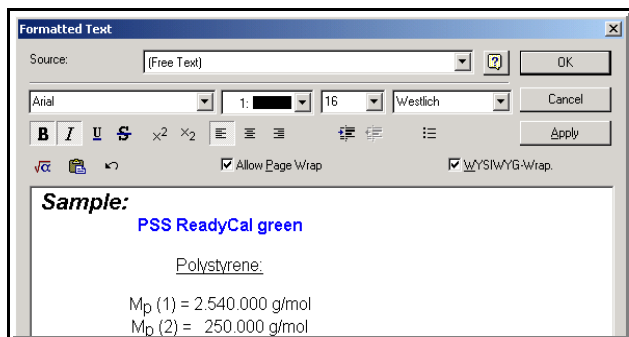


formatted with easy-to-use windows controls. All commands are according to industrial standards:

- Drag&Drop
- object move by mouse
- automatic object arrangement
- grid arrangement for higher accuracy

Comprehensive editors help to design informative reports.

Text editors allow free selection of font and size, and color for important information. Upper-case and lower-case characters in combination with typical tools for formatting make all reports easy to read.

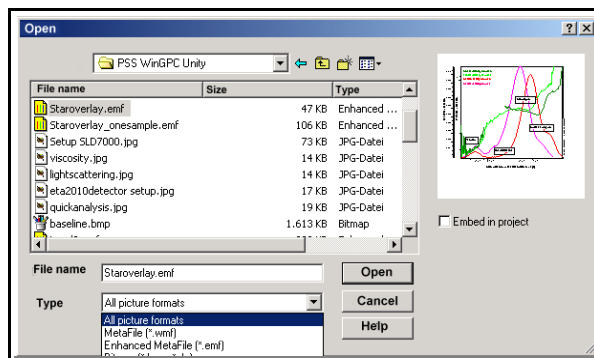


Powerful table tools offer an effective way to summarize information in tables with header lines, data lines and optional subheadings and footer lines.

## Open Approach

The WinGPC Unity Designer allows the user to integrate graphics (e.g. plots or company logos) from any other application.

Many different file formats, e.g. wmf, emf, bmp, jpeg, tif, and others, can be imported or linked. All graphics remain scalable for optimum sizing.



## Innovative Ideas

The WinGPC Unity Report Designer offers options that outshine any report presentation tool. Work flow support on many levels helps to organize and manage samples, reports and resources:

- lab statistics for the WinGPC Unity sample databases
- automatic calculation, e.g. of averages for repeated injections
- automatic intelligent rounding of results
- comment options during printout
- appearance conditions for elements according to user selectable flags
- powerful overlay presentation with automatic sorting for screening experiments

When help is needed: user documentation and on-line help are available. Example layouts show options and provide predesigned objects that can be used in own reports.

### System requirements

Software	WinGPC Version 6 or later
Hardware, minimum	Pentium 3, 600 MHz, 256 MB RAM, 20 GB Hard disk, XGA Graphic Card, 17" Monitor
Operating System	Windows 9x, ME, NT, 2000, XP

### Order information

400-1001 Report Designer Module

*Product names are protected by manufacturers. Missing marks do not necessarily mean that they are free for use. The information in this publication is subject to change without notice.*