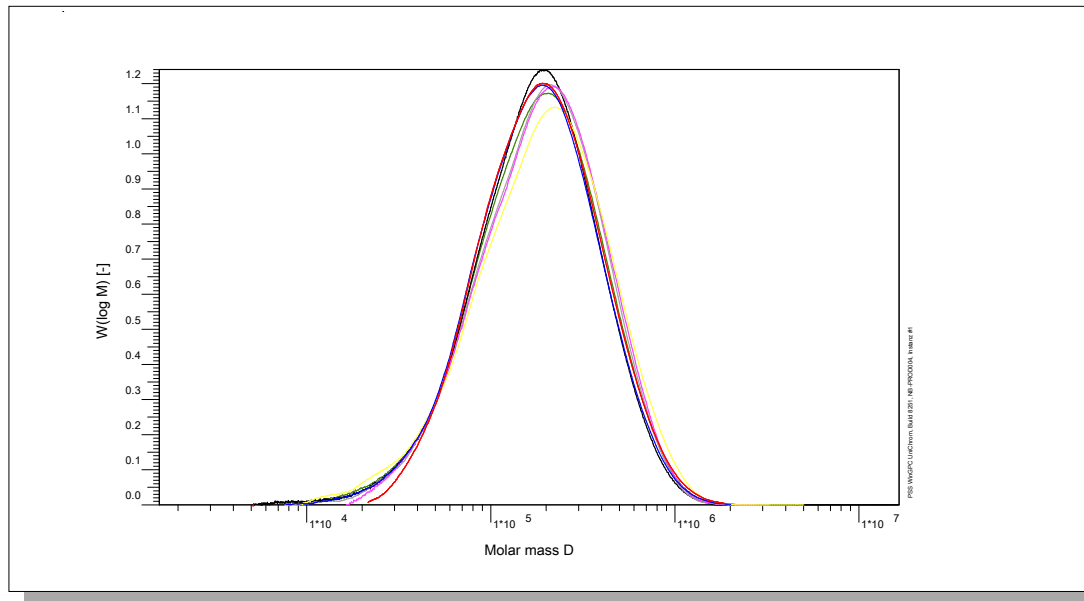


Certificate of Analysis

Polymer type: Certified Reference Materials Poly(L-lactide)
 Part No: PSS-cpla230k
 Lot No: BAM-P010

Molar Mass Distribution



GPC/SEC - Conditions

Sample concentration	1,00 g/l	Inject volume	100 µl
Solvent	THF + 0.2Vol% TFA	Flow rate	1,00 ml/min
Precolumn [8 x 50 mm]	PSS SDV 5µm	Temperature	23 °C
Columns [analytical, each 8 x 300 mm]	PSS SDV 5µm 10e3Å / 10e5Å	Operator	S. Fugmann
Data Acquisition Software	PSS WinGPC		

GPC/SEC - Results

Detector	Mw [Da]	Mn [Da]	Mp [Da]	PDI [Mw/Mn]
Shodex RI 71	249400	127300	-	1,98

Note:

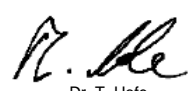
Mw = Weight average molecular weight
 Mn = Number average molecular weight
 Mp = Molar mass at the peak maximum
 PDI = Polydispersity Index

GPC/SEC - Results based on calibration with Poly(styrene)

- BAM-P010, 2005/08/18
- BAM-P010, 2010/11/05
- BAM-P010, 2012/08/28
- BAM-P010, 2014/04/03
- BAM-P010, 2016/02/29
- BAM-P010, 2018/03/19
- BAM-P010, 2019/03/07

Storage: Store the tightly recapped polymer standard in a dry, dark, cool area; e.g. a refrigerator (4 °C).
Usability: Proper storage (see above) the usability is up to yyyy/mm/dd.
Recertification: Recertified values are within the original mean value and confidence intervall.

Manufacture control according to PSS method of analysis


 Dr. T. Hofe
 production director

