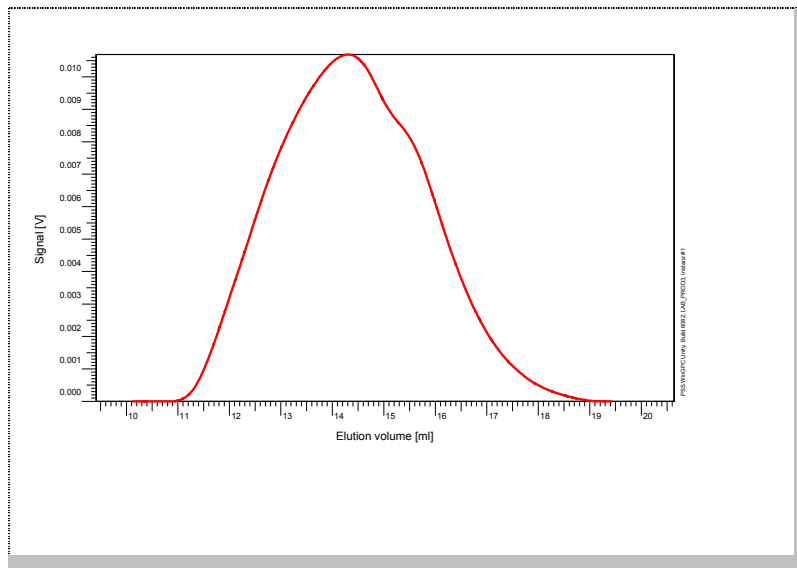


Certificate of Analysis

Polymer type: Poly(dodecyl methacrylate-b-n-butyl methacrylate)
 Part No: PSS-dmnb230k
 Lot No: dcnb1062

Eluogramm



GPC/SEC – Conditions

Sample concentration	3,89 g/l	Inject volume	60 µl
Solvent	Tetrahydrofuran	Flow rate	1.00 ml/min
Temperature	23° C		
Precolumn [8 x 50 mm]	PSS SDV 5µm		
Columns [analytical, each 8 x 300 mm]	PSS SDV 5µm linear M / linear M		
Data Acquisition Software	PSS WinGPC	Operator	G. Reinhold

GPC/SEC – Results*

Detector	Mw [Da]	Mn [Da]	Mp [Da]	PDI [Mw/Mn]
Agilent RID	226 000	82 800	143 000	2.74

* molar mass calculation based on monomer consumption

Copolymer - Composition	[w %]
Poly(dodecyl methacrylate)	-
Poly(n-butyl methacrylate)	-


Note:

Mw = Weight Average Molecular Weight
 Mn = Number Average Molecular Weight
 Mp = Molar Mass at the Peak Maximum
 PDI = Polydispersity Index

Storage: Store the tightly recapped polymer standard in a dry, dark, cool area; e.g. a refrigerator (4 °C).

Date of expiry: See product label.

Manufacture and control according to PSS method of analysis


 Dr. T. Hofe
 production director

