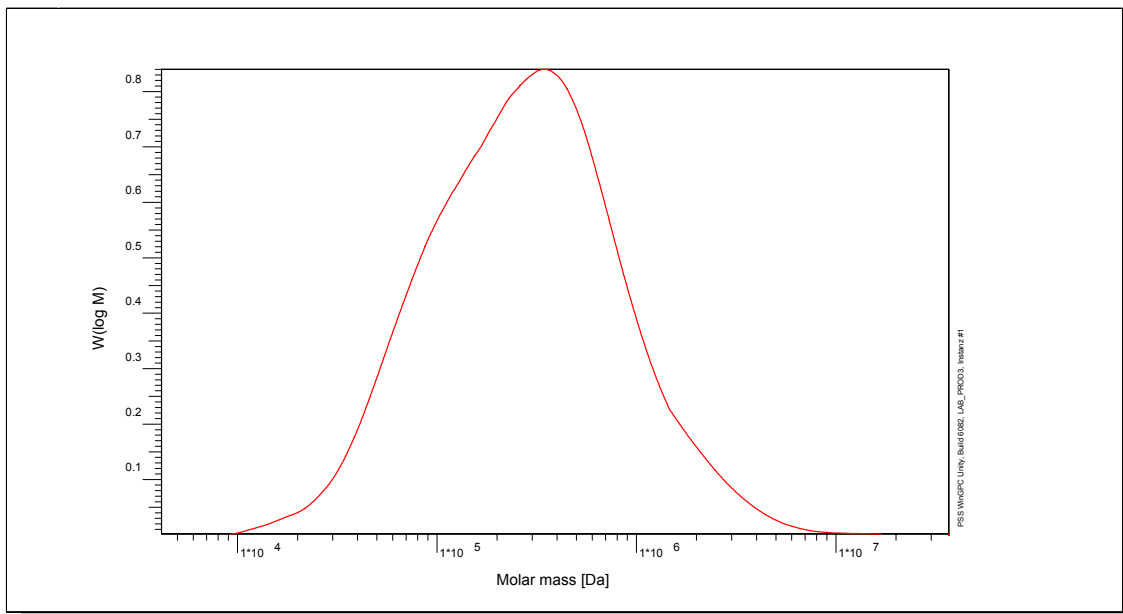


Certificate of Analysis

Polymer type: Dextran broad/branched
 Part No: PSS-dxtb1.5m
 Lot No: dxtb2000-3

Molar Mass Distribution



GPC/SEC - Conditions

Sample concentration	0,20 g/l	Inject volume	100 µl
Solvent	Water, 0.05% sodium azide	Flow rate	0,50 ml/min
Precolumn [8 x 50 mm]	PSS Suprema 10µm	Temperature	25,0° C
Columns [analytical, each 8 x 300 mm]	PSS SUPREMA 10µm 3 000Å / 3 000Å	Operator	S. Fugmann
Data Acquisition Software	PSS WinGPC		

GPC/SEC - Results

Detector	Mw (Da)	Mn (Da)	Mp (Da)	PDI (Mw/Mn)
Shodex RI 71	490000	153000	-	3,20

Note:

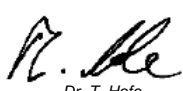
Mw = Weight average molecular weight
 Mn = Number average molecular weight
 Mp = Molar mass at the peak maximum
 PDI = Polydispersity Index

GPC/SEC - Results based on Pullulan calibration.
 Light scattering - Result: Mw (Da) = 1 520 000

Storage: Store the tightly recapped polymer standard in a dry, dark, cool area; e.g. a refrigerator (4 °C).

Date of expiry: See product label.

Manufacture control according to PSS method of analysis


 Dr. T. Hofe
 production director

