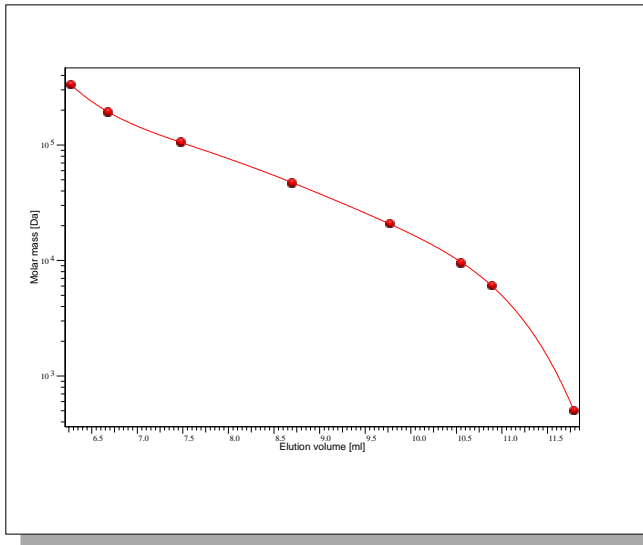


# Certificate of Analysis

Product: EasyValid Validation Kit  
 Part No: PSS-dxtkitval  
 Lot No: dxtkitval-02

## GPC/SEC - Calibration Curve



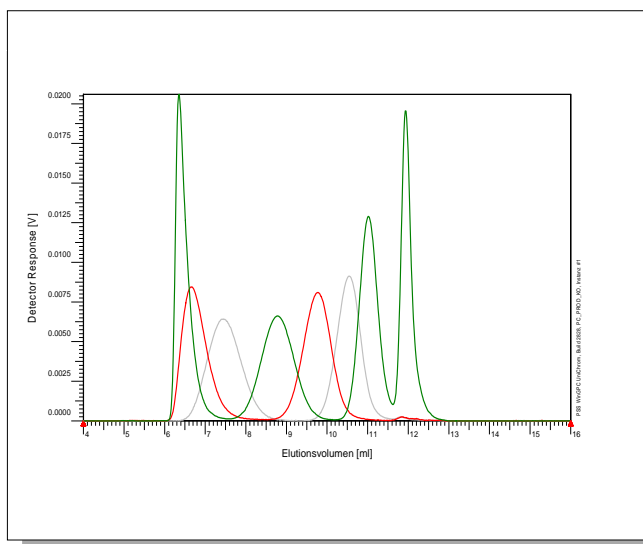
## GPC/SEC - Calibration Table

Elution volume [ml]	Mp [Da]	Polymer Lot No:
6,27	337000	p-400-4
6,67	194000	p-200-3
7,48	107000	p-100-2
8,69	47100	p-50-2
9,77	21100	p-20-2
10,54	9600	p-10-2
10,89	6100	p-5-3
11,79	504	dxtp3

**Note:**

Mp = Molar mass at the peak maximum

## GPC/SEC - Polymer Overlay



## GPC/SEC - Calibration Conditions

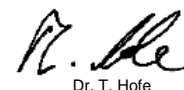
Solvent: Water, Sodium azide 0.5 g/L  
 Flow rate: 1,00 ml/min  
 Columns [8 x 300 mm]: PSS EasyValid aqueous Version02 10µm  
 Temperature: 25 °C  
 Inject volume: 20 µl  
 Internal standard: none at 0,00 ml  
 Data Acquisition Software: PSS WinGPC  
 Calibration by: K. Oleschko  
 Fit quality: R  
 Fit-type: Polynomial 5  
 R: 0,999979

**Storage:** Store the tightly recapped polymer standard in a dry, dark, cool area; e.g. a refrigerator (4 °C).

**Date of expiry:** yyyy/mm/dd (See also product label.)

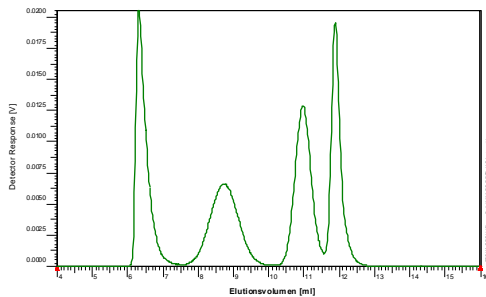
**Date of approval:** yyyy/mm/dd

Manufacture and control according to PSS method of analysis



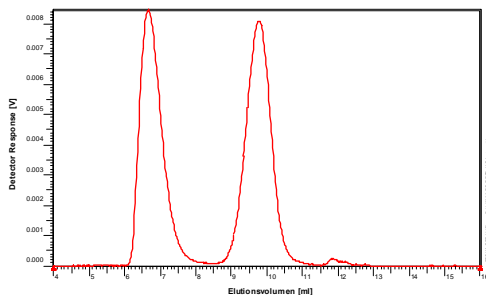
Dr. T. Hofe  
 production director

Product: EasyValid Validation Kit  
 Part No: PSS-dxtkitval  
 Lot No: dxtkitval-02



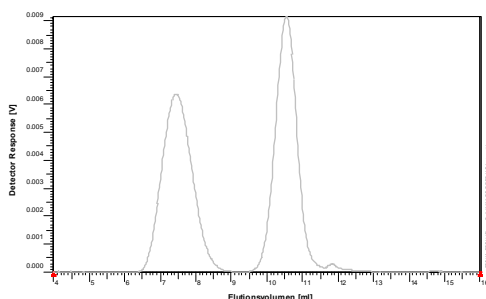
Colour code: Cap - green Vial - clear / without label

Mp [Da]	Mw [Da]	Mn [Da]	Mass [mg]	Lot No:
337 000	348 000	310 000	1.50	p-400-4
47 100	48 800	45 500	1.50	p-50-2
6 100	6 200	5 900	1.50	p-5-3
504	504	504	1.50	dxtp3



Colour code: Cap - red Vial - clear / without label

Mp [Da]	Mw [Da]	Mn [Da]	Mass [mg]	Lot No:
194 000	200 000	184 000	1.50	p-200-3
21 100	21 700	20 000	1.50	p-20-2



Colour code: Cap - white Vial - clear / without label

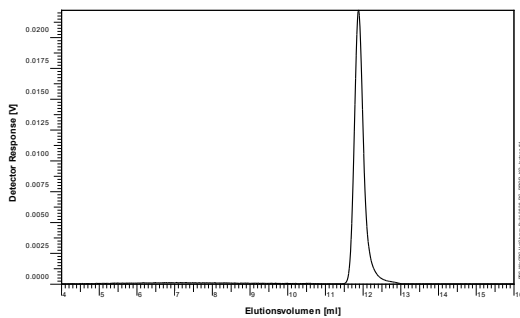
Mp [Da]	Mw [Da]	Mn [Da]	Mass [mg]	Lot No:
107 000	113 000	100 000	1.50	p-100-2
9 600	10 000	9 200	1.50	p-10-2

For exact determination of sample concentration, we recommend to add the solvent volume precisely.

Level of eluent	full
Volume of eluent	1.5 ml
Concentration	1 g/l

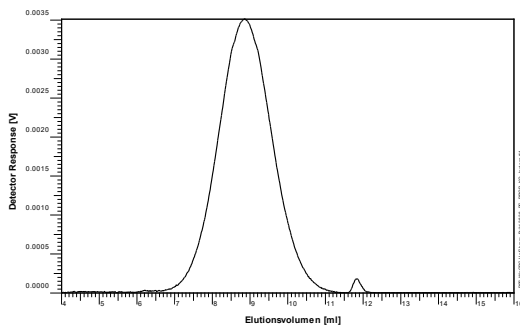
Product: EasyValid Validation Kit  
 Part No: PSS-dxtkitval  
 Lot No: dxtkitval-02

### GPC/SEC – Elugram



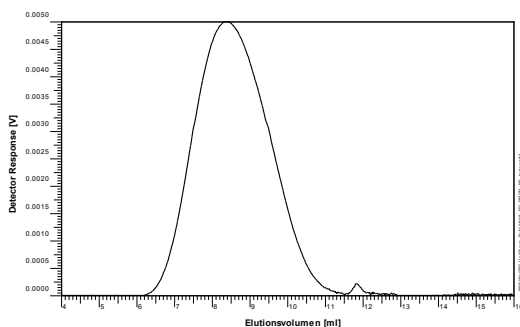
Colour code: Cap - black Vial - clear / without label

Mp [Da]	Mw [Da]	Mn [Da]	Mass [mg]	Lot No:
180	180	180	1.50	dxtp1



Colour code: Cap - blue Vial - clear / without label

Mp [Da]	Mw [Da]	Mn [Da]	Mass [mg]	Lot No:
-	45 500	33 800	1.50	dxt50-ev2



Colour code: Cap - yellow Vial - clear / without label

Mp [Da]	Mw [Da]	Mn [Da]	Mass [mg]	Lot No:
-	59 200	38 800	3.00 *	dxtb60-ev2

For exact determination of sample concentration, we recommend to add the solvent volume precisely.

Level of eluent	full
Volume of eluent	1.5 ml
Concentration	1 g/l resp. 2g/l