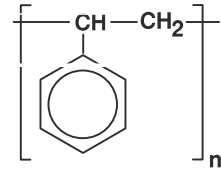
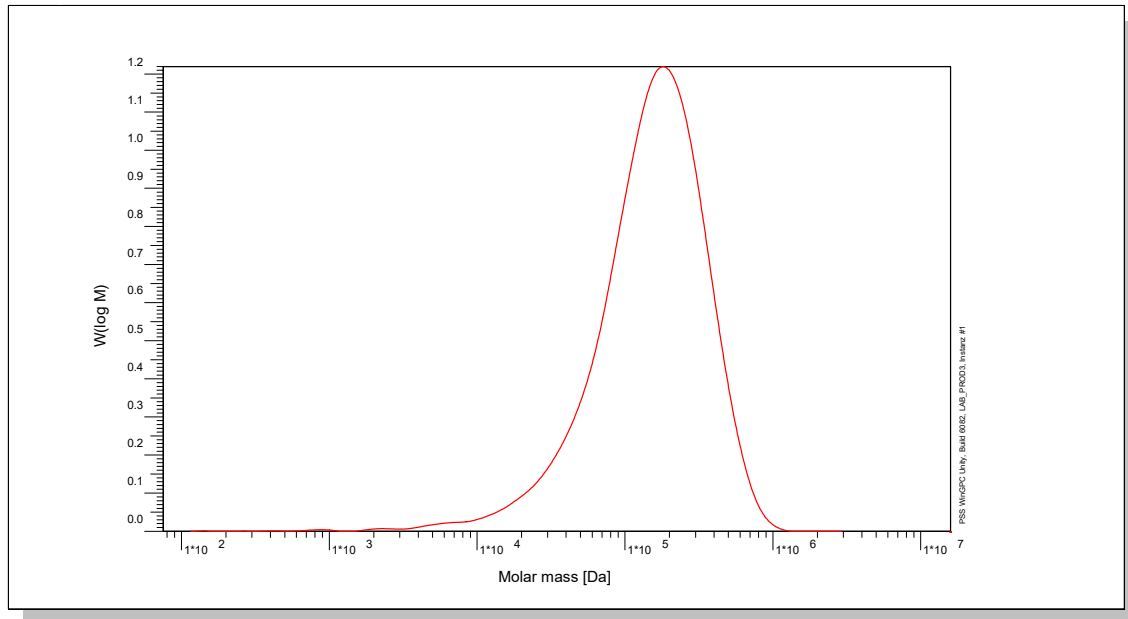


Certificate of Analysis

Polymer type: Poly(styrene) broad Membrane Standard
 Part No: PSS-mepsb200k
 Lot No: mepsb200k



Molar Mass Distribution



GPC/SEC - Conditions

Sample concentration	4,40 g/l	Inject volume	100 µl
Solvent	THF	Flow rate	1,00 ml/min
Columns	PSS SDV 5µm 10e3Å / 10e5Å / 10e6Å	Temperature	25,0 °C
Data Acquisition Software	PSS WinGPC	Operator	FG

GPC/SEC - Results

Detector	Mw (Da)	Mn (Da)	Mp (Da)	PDI (Mw/Mn)
RI	178000	91500	-	1,94

Detector	Mw min. (Da)	Mw max. (Da)	Rg min. (nm)	Rg max. (nm)
PSS SLD 7000	34 000	505 000	10	29

Note:


Mw: Weight Average Molecular Weight Mw min. = 5w%; Mw max. = 95w%
 Mn: Number Average Molecular Weight Rg min. = 5w%; Rg max. = 95w%
 Mp: Molar Mass at the Peak Maximum
 PDI: Polydispersity Index

Storage: Store the tightly recapped polymer standard in a dry, dark, cool area; e.g. a refrigerator (4 °C).

Date of expiry: yyyy/mm/dd (See also product label.)

Date of approval: yyyy/mm/dd

Manufacture control according to PSS method of analysis


 Dr. T. Hofe
 production director

