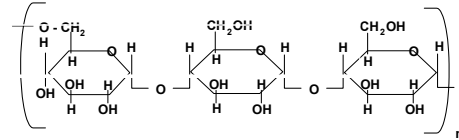
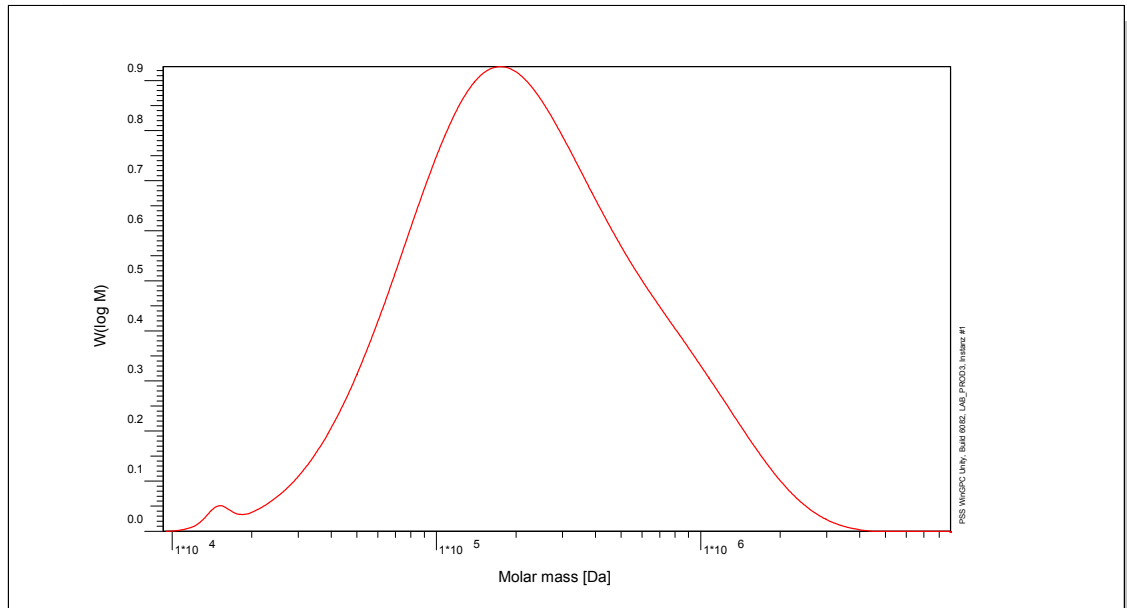


# Certificate of Analysis

Polymer type: Pullulan broad Membrane Standard  
 Part No: PSS-mepulb300k  
 Lot No: mepulb300k



## Molar Mass Distribution



## GPC/SEC - Conditions

Sample concentration	3,01 g/l	Inject volume	100 µl
Solvent	Water, Sodium azide 0.05%	Flow rate	0,50 ml/min
Precolumn [8 x 50 mm]	PSS SUPREMA 10µm	Temperature	25,0° C
Columns [analytical, each 8 x 300 mm]	PSS SUPREMA 10µm 30Å / 3 000Å / 3 000Å		
Data Acquisition Software	PSS WinGPC	Operator	S. Fugmann

## GPC/SEC/LS - Results

Detector	Mw (Da)	Mn (Da)	Mp (Da)	PDI (Mw/Mn)
Agilent RID	342000	110000	-	3,12

Detector	M min. (Da)	M max. (Da)	Rg min. (nm)	Rg max. (nm)
PSS SLD 7000	25 000	1 200 000	<5	45


**Note:**

Mw: Weight Average Molecular Weight      M min. = 5w%;    M max. = 95w%  
 Mn: Number Average Molecular Weight      Rg min. = 5w%;    Rg max. = 95w%  
 Mp: Molar Mass at the Peak Maximum  
 PDI: Polydispersity Index

**Storage:** Store the tightly recapped polymer standard in a dry, dark, cool area; e.g. a refrigerator (4 °C).

**Date of expiry:** See product label.

*Manufacture control according to PSS method of analysis*

  
 Dr. T. Hofe  
 production director

