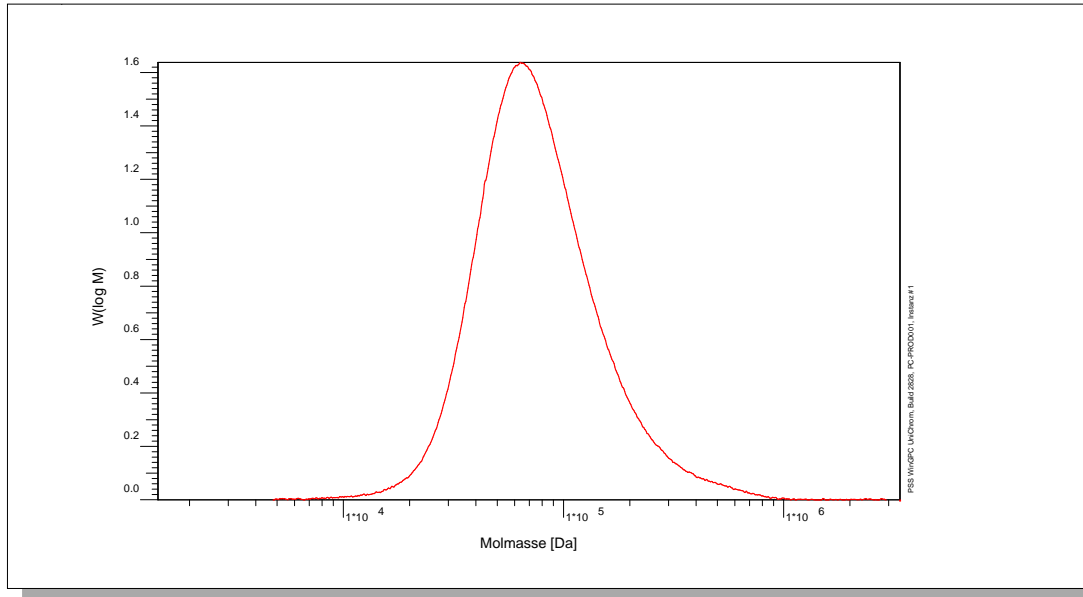


# Certificate of Analysis

Polymer type: Poly(ethylene)  
 Part No: PSS-pe100k  
 Lot No: pe20n

## Molar Mass Distribution



## GPC/SEC - Conditions

Sample concentration	2,42 g/l	Inject volume	200 µl
Solvent	1,2,4-Trichlorbenzol	Flow rate	1,00 ml/min
Precolumn [8 x 50 mm]	PSS POLEFIN 10µm	Temperature	160 °C
Columns [analytical, each 8 x 300 mm]	PSS POLEFIN 10µm linear XL / linear XL / linear XL / linear XL		
Data Acquisition Software	PSS WinGPC	Operator	P. Montag

## GPC/SEC - Results

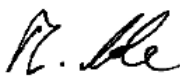
Detector	Mw [Da]	Mn [Da]	Mp [Da]	PDI [Mw/Mn]
GPC-IR4-CH2	99700	65400	66300	1,53

**Note:**

Mw = Weight average molecular weight  
 Mn = Number average molecular weight  
 Mp = Molar mass at the peak maximum  
 PDI = Polydispersity Index

**Storage:** Store the tightly recapped polymer standard in a dry, dark, cool area; e.g. a refrigerator (4 °C).  
**Date of expiry:** See product label.

Manufacture control according to PSS method of analysis

  
 Dr. T. Hofe  
 production director

