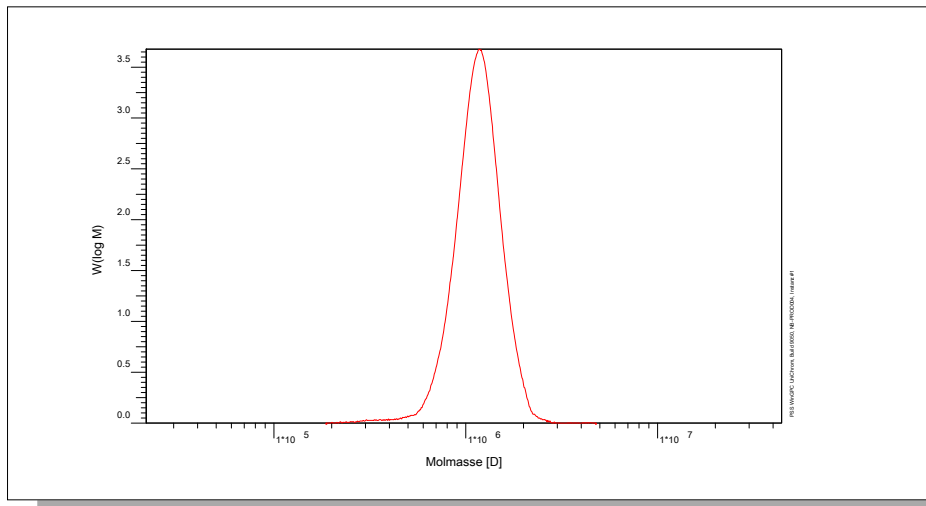


Certificate of Analysis

Polymer type: Poly(ethylene oxide)
 Part No: PSS-peo1.2m
 Lot No: peo120520

Molar Mass Distribution



GPC/SEC - Conditions

Sample concentration	0,50 g/l	Inject volume	20 µl
Solvent	Water, Sodium azide 0.2g/L	Flow rate	1,00 ml/min
Precolumn [8 x 50 mm]	PSS SUPREMA 10µm	Temperature	23 °C
Columns [analytical, each 8 x 300 mm]	PSS SUPREMA 10µm ultrahigh / ultrahigh / ultrahigh		
Data Acquisition Software	PSS WinGPC	Operator	A.Klein

GPC/SEC - Results

Detector	Mw [Da]	Mn [Da]	Mp [Da]	PDI [Mw/Mn]
PSS SECcurity RI	1200000	1110000	1180000	1,08

Additional Methods - Results

Method	Mw [Da]
Light Scattering, on-line (SLD7x00)	1200000

Mw = Weight average molecular weight
 Mn = Number average molecular weight
 Mp = Molar mass at the peak maximum
 PDI = Polydispersity Index

Light Scattering run on-line, based on Toluene Rayleigh Ratio $R_{\theta} = 1.404 \cdot 10^{-5} \text{ cm}^{-1}$ at 633 nm.

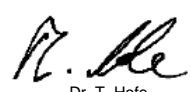
System and instrument validation based on Pullulan Lot No: p-100-4.

Sample concentration 0,5993 g/L
 Inject volume 100µL

Polymer stabilized with 500 ppm Irganox® 1076.

Storage: Store the tightly recapped polymer standard in a dry, dark, cool area; e.g. a refrigerator (4 °C).
Date of expiry: yyyy/mm/dd (See also product label.)
Date of approval: yyyy/mm/dd

Manufacture and control according to PSS method of analysis



Dr. T. Hofe
production director

