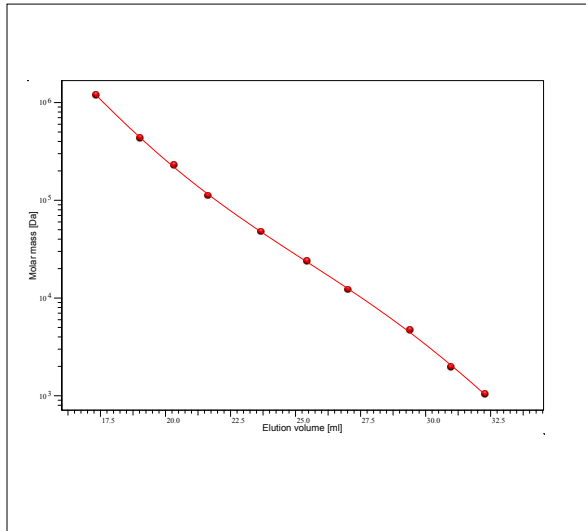


# Certificate of Analysis

Product: Kit Poly(isoprene-1.4)  
 Part No: PSS-piokit  
 Lot No: piokit-08

## GPC/SEC - Calibration Curve



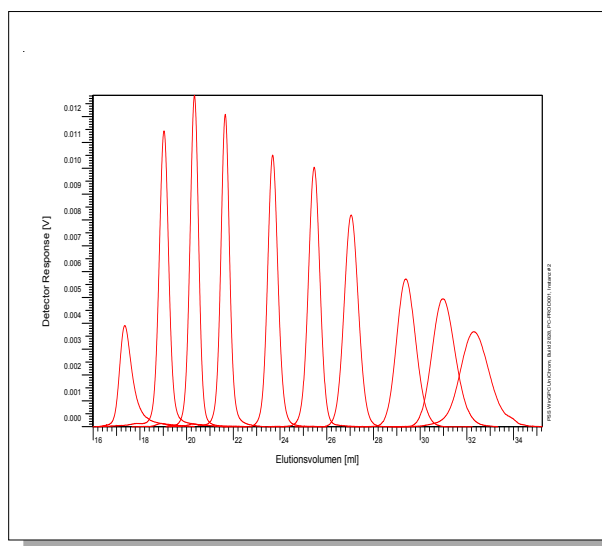
## GPC/SEC - Calibration Table

Elution volume [ml]	Mp [Da]	Polymer Lot No:	Polymer Part No:
17,35	1180000	pio140904n	PSS-pio1m
19,03	434000	pio160904	PSS-pio470k
20,34	226000	pio200313	PSS-pio210k
21,65	111000	pio180315	PSS-pio100k
23,69	47500	pio190706	PSS-pio47k
25,46	23500	pio130706	PSS-pio21k
27,04	12100	pio140115	PSS-pio12k
29,41	4620	pio260115	PSS-pio4.7k
30,99	1960	pio180313	PSS-pio2.1k
32,31	1030	pio151007	PSS-pio1k

**Note:**

Mp = Molar mass at the peak maximum

## GPC/SEC - Polymer Overlay



## GPC/SEC - Calibration Conditions

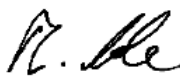
Solvent: Tetrahydrofurane  
 Flow rate: 1,00 ml/min  
 Precolumn [8 x 50 mm]: PSS SDV 5µm  
 Columns [8 x 300 mm]: PSS SDV 5µm 10e3Å / 10e5Å / 10e6Å  
 Temperature: 35 °C  
 Inject volume: 20 µl  
 Internal standard: Toluene at 37,63 ml  
 Data Acquisition Software: PSS WinGPC  
 Calibration by: J.Preis

**Fit quality**

Fit-type: PSS Poly 5  
 R: 0,999935

Storage: Store the tightly recapped polymer standards in a dry, dark, cool area; e.g. a refrigerator (4 °C).  
 Date of expiry: See product label.

Manufacture and control according to PSS method of analysis

  
 Dr. T. Hofe  
 production director

