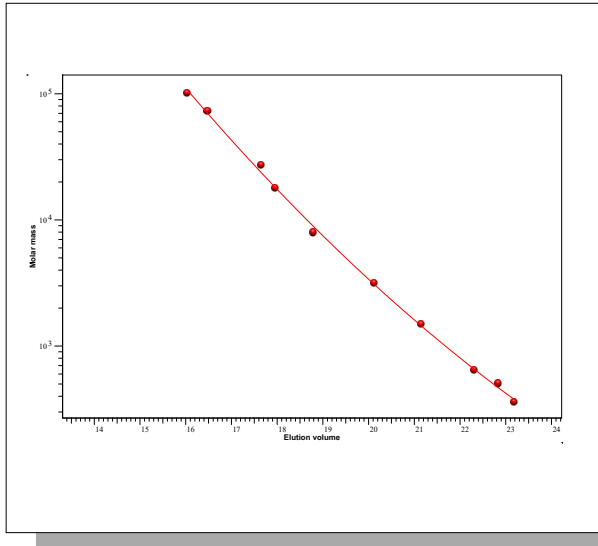


Certificate of Analysis

Product: Kit Poly(L-lactide) high
 Part No: PSS-plakith
 Lot No: plakith-04

GPC/SEC - Calibration Curve



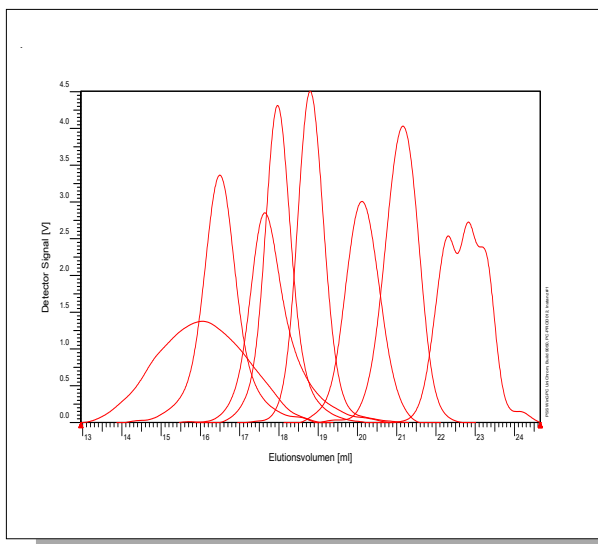
GPC/SEC - Calibration Table

Elution volume [ml]	Mp [Da]	Polymer Lot No:	Polymer Part No:
16,05	101000	plab141204	PSS-plab200k
16,49	72200	pla111213	PSS-pla70k
17,65	26900	pla70304	PSS-pla28k
17,96	17700	pla150719	PSS-pla18k
18,79	7900	pla200614	PSS-pla8k
20,12	3140	pla140719	PSS-pla3k
21,15	1480	pla130719	PSS-pla1.5k
22,32	646	pla120719	PSS-pla500
22,83	502	pla120719	PSS-pla500
23,18	358	pla120719	PSS-pla500

Note:

Mp = Molar mass at the peak maximum

GPC/SEC - Polymer Overlay



GPC/SEC - Calibration Conditions

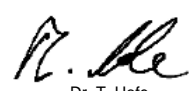
Solvent HFIP / 0.05M KTFAC
 Flow rate 1,00 ml/min
 Precolumn [8 x 50 mm] PSS PFG 7µm
 Columns [8 x 300 mm] PSS PFG 7µm linear M / linear M
 Temperature 23 °C
 Inject volume 20 µl
 Internal standard none
 Data Acquisition Software PSS WinGPC
 Calibration by J.Preis

Fit quality

Fit-type Polynomial 3
 R 0,999464

Storage: Store the tightly recapped polymer standards in a dry, dark, cool area; e.g. a refrigerator (4 °C).
 Date of expiry: yyyy/mm/dd (See also product label.)
 Date of approval: yyyy/mm/dd

Manufacture control according to PSS method of analysis


 Dr. T. Hofe
 production director

