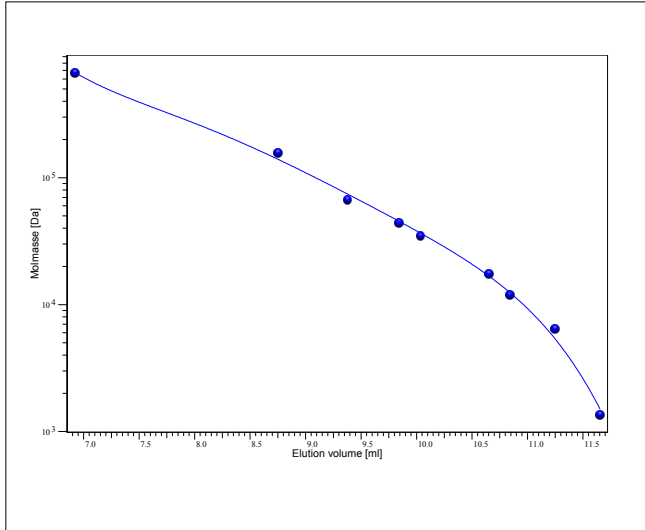


Certificate of Analysis

Product: Kit Protein being used with PSS PROTEEMA 5µm 300Å
 Part No: PSS-prokit
 Lot No: prokit-10

GPC/SEC - Calibration Curve



GPC/SEC - Calibration Conditions

Solvent	Phospat buffer pH6.6 34mmol/L, Sodium chloride 0.5M
Flow rate	1,00 ml/min
Precolumn [8 x 50 mm]	PSS PROTEEMA 5µm
Columns [8 x 300 mm]	PSS PROTEEMA 5µm 300Å
Temperature	23 °C
Inject volume	5 µl
Internal standard	none
Data Acquisition Software	PSS WinGPC
Calibration by	J.Preis
Fit quality	
Fit-type	PSS Poly 5
R	0,998460

GPC/SEC - Calibration Table

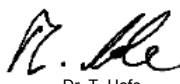
Elution volume [ml]	M [Da]	Lot No. / Protein type
6,9190	670000	proTG170717, Thyroglobulin from bovine thyroid
8,7525	158000	proGG180717, Gamma-globulins from bovine blood
9,3777	67000	proAB031211n, Albumin from bovine
9,8407	44000	proAC140717, Albumin from chicken egg white
10,0355	35000	proLG150717, Beta-lactoglobulin from bovine milk
10,6490	17600	proMG190717, Myoglobin from equine skeletal muscle
10,8432	12000	proCB200717, Cytochrome c from bovine heart
11,2478	6500	proAP130717, Aprotinin
11,6522	1350	proVI160717, Vitamin B12

Note:

M = Molar mass at the peak maximum

Storage: Store the proteins in the tightly recapped vials in a cool, dry and dark area; e.g. (-20 °C).
 Date of expiry: See product label.

Manufacture control according to PSS method of analysis

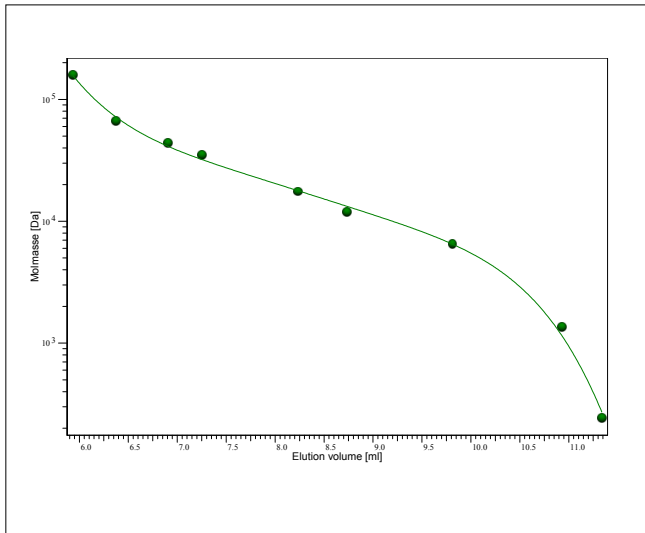

 Dr. T. Hofe
 production director



Certificate of Analysis

Product: Kit Protein being used with PSS PROTEEMA 5µm 100Å
 Part No: PSS-prokit
 Lot No: prokit-10

GPC/SEC - Calibration Curve



GPC/SEC - Calibration Conditions

Solvent	Phospat buffer pH6.6 34mmol/L, Sodium chloride 0.5M
Flow rate	1,00 ml/min
Precolumn [8 x 50 mm]	PSS PROTEEMA 5µm
Columns [8 x 300 mm]	PSS PROTEEMA 5µm 100Å
Temperature	23 °C
Inject volume	20 µl
Internal standard	none
Data Acquisition Software	PSS WinGPC
Calibration by	J.Preis
Fit quality	
Fit-type	PSS Poly 5
R	0,998983

GPC/SEC - Calibration Table

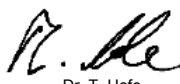
Elution volume [ml]	M [Da]	Lot No: / Protein type
5,9330	158000	proGG180717, Gamma-globulins from bovine blood
6,3728	67000	proAB031211n, Albumin from bovine
6,9045	44000	proAC140717, Albumin from chicken egg white
7,2527	35000	proLG150717, Beta-lactoglobulin from bovine milk
8,2307	17600	proMG190717, Myoglobin from equine skeletal muscle
8,7297	12000	proCB200717, Cytochrome c from bovine heart
9,8117	6500	proAP130717, Aprotinin
10,9317	1350	proVI160717, Vitamin B12
11,3370	243	proCY140314n, Cytidine

Note:

M = Molar mass at the peak maximum

Storage: Store the proteins in the tightly recapped vials in a cool, dry and dark area; e.g. (-20 °C).
 Date of expiry: See product label.

Manufacture control according to PSS method of analysis


 Dr. T. Hofe
 production director



PSS Polymer Standards Service GmbH
 In der Dalheimer Wiese 5
 55120 Mainz | Germany

Phone +49 6131 96239-0
Fax +49 6131 96239-11
E-Mail info@pss-polymer.com
Web www.pss-polymer.com

Polymer Standards Service-USA, Inc.
 160 Old Farm Rd, Suite A
 Amherst | MA 01002 | USA

Phone +1 413 835-0265
Fax +1 413 835-0354
E-Mail usa@pss-polymer.com
Web www.pss-polymer.com