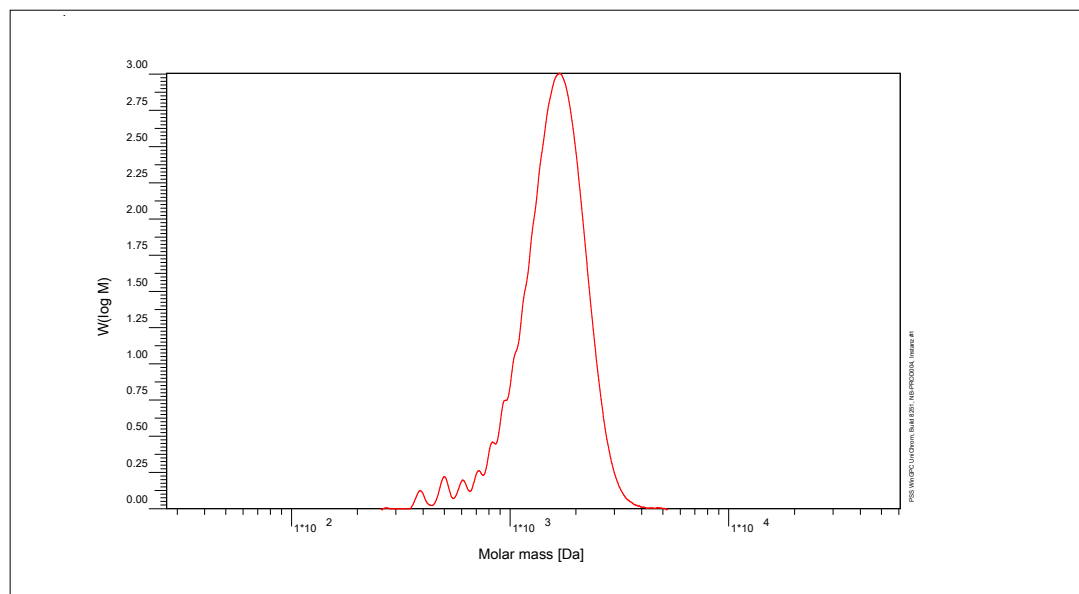


Certificate of Analysis

Polymer type: Poly(styrene-alpha-methylstyrene)
 Part No: PSS-psams1.5k-2
 Lot No: psams291018

Molar Mass Distribution



GPC/SEC - Conditions

Sample concentration	1,00 g/l	Inject volume	20 µl
Solvent	Tetrahydrofuran	Flow rate	1,00 ml/min
Precolumn [8 x 50 mm]	PSS SDV 3µm	Temperature	23 °C
Columns [analytical, each 8 x 300 mm]	PSS SDV 3µm 1000Å / 1000Å / 1000Å	Operator	J.Preis
Data Acquisition Software	PSS WinGPC		

GPC/SEC - Results *

Detector	Mw [Da]	Mn [Da]	Mp [Da]	PDI [Mw/Mn]
PSS SECcurity RI	1620	1410	1680	1.15

* GPC/SEC - Results based on poly(styrene) calibration

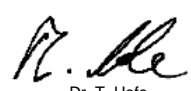
Copolymer - Composition**	[w %]
Poly(styrene)	20
Poly(alpha-methylstyrene)	80

** based on gravimetric monomer consumption

Note:

- Mw = Weight average molecular weight
- Mn = Number average molecular weight
- Mp = Molar mass at the peak maximum
- PDI = Polydispersity Index

Manufacture and control according to PSS method of analysis


 Dr. T. Hofe
 production director

