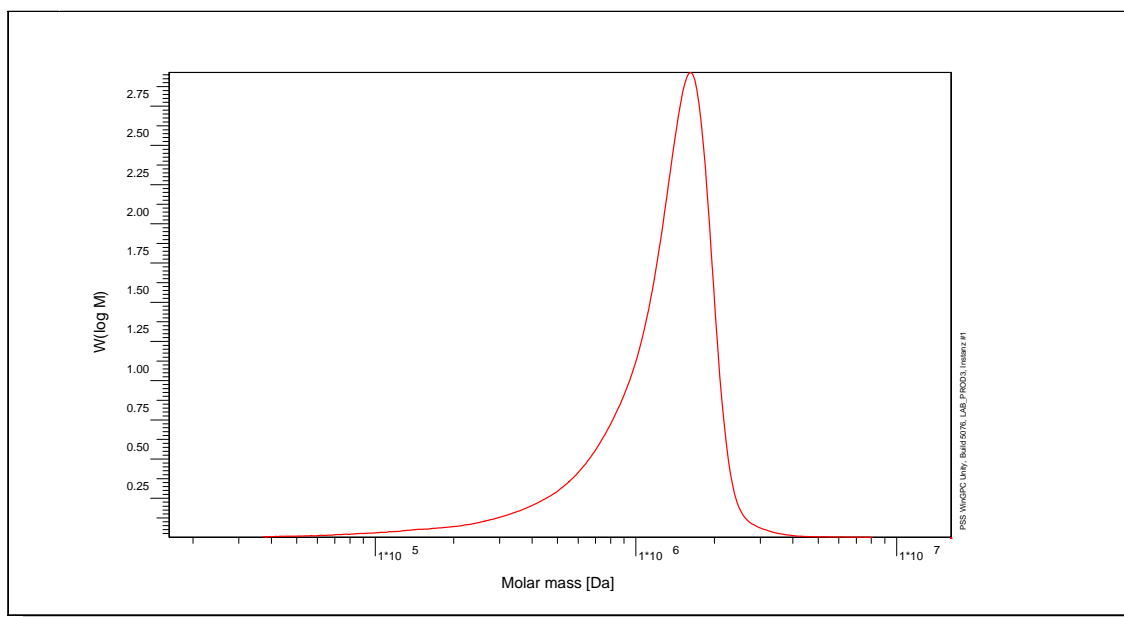


Certificate of Analysis

Polymer type: Poly(styrene)
 Part No: PSS-ps1.4m
 Lot No: psbs79

Molar Mass Distribution



GPC/SEC - Conditions

Sample concentration	0,10 g/l	Inject volume	100 µl
Solvent	THF	Flow rate	1,00 ml/min
Precolumn [8 x 50 mm]	PSS SDV 10µm	Temperature	25,0° C
Columns [analytical, each 8 x 300 mm]	PSS SDV 10µm linear XL / linear XL		
Data Acquisition Software	PSS WinGPC	Operator	T. Hofe

GPC/SEC - Results

Detector	Mw (Da)	Mn (Da)	Mp (Da)	PDI (Mw/Mn)
Shodex RI 71	1430000	1330000	1600000	1,07

Note:


Mw = Weight Average Molecular Weight
 Mn = Number Average Molecular Weight
 Mp = Molar Mass at the Peak Maximum
 PDI = Polydispersity Index

Storage: Store the tightly recapped polymer standard in a dry, dark, cool area; e.g. a refrigerator (4 °C).

Expiration date: 5 years after purchase date provided standard is stored as described above.

Purchase date:

Manufacture and control according to PSS method of analysis



Dr. T. Hofe
production director