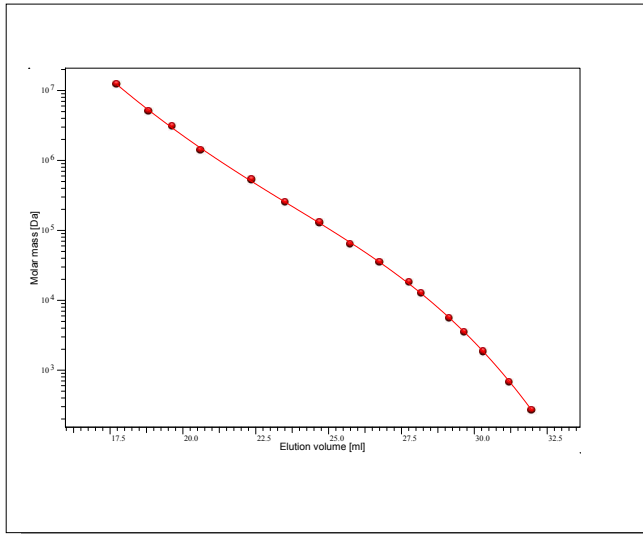


# Certificate of Analysis

Product: ReadyCal-Kit Poly(styrene) HT  
 Part No: PSS-pskitr10ht  
 Lot No: pskitr10ht-02

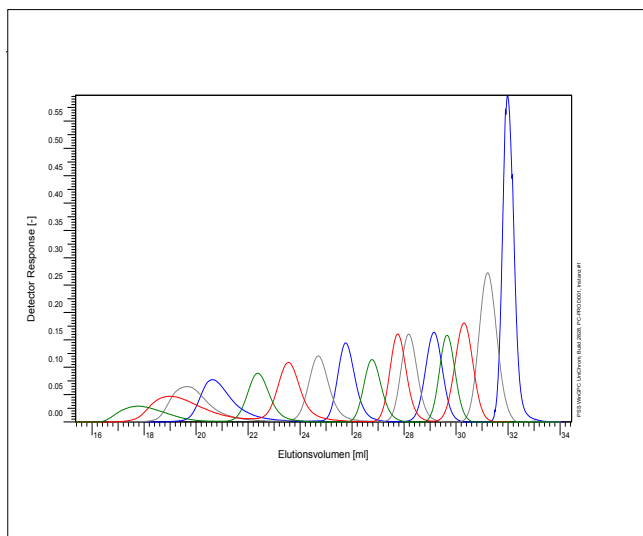
## GPC/SEC - Calibration Curve



## GPC/SEC - Calibration Table

Elution volume [ml]	Mp [Da]	Polymer Lot No:
17,74	12200000	ps020713
18,84	5090000	ps280303
19,65	3080000	ps070312
20,62	1400000	ps16124
22,38	526000	ps10128
23,52	250000	ps5070
24,70	127000	ps10065
25,75	63000	ps22031
26,76	34800	ps9029n
27,77	18000	ps021210
28,18	12600	ps5019
29,15	5490	ps230213
29,66	3500	ps010410
30,32	1820	ps200504
31,22	672	ps11124
31,98	266	psp2-4

## GPC/SEC - Polymer Overlay



### Note:


Mp = Molar mass at the peak maximum

### GPC/SEC - Calibration Conditions

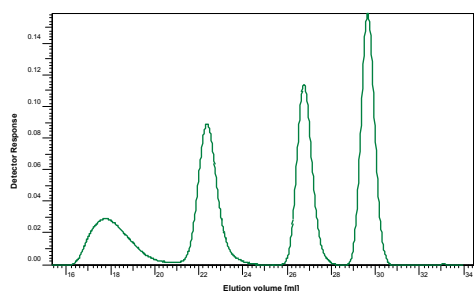
Solvent: 1,2,4-Trichlorobenzene  
 Flow rate: 1,00 ml/min  
 Precolumn [8 x 50 mm]: PSS POLEFIN 20µm  
 Columns [8 x 300 mm]: PSS POLEFIN 20µm linear XL / linear XL / linear XL  
 Temperature: 150 °C  
 Inject volume: 200 µl  
 Internal standard: none  
 Detector: IR-Detector  
 Data Acquisition Software: PSS WinGPC  
 Calibration by: P. Montag  
 Fit quality: Polynomial 5  
 R: 0,999937

Storage: Store the tightly recapped polymer standards in a dry, dark, cool area; e.g. a refrigerator (4 °C).  
 Date of expiry: yyyy/mm/dd (See also product label.)  
 Date of approval: yyyy/mm/dd

Manufacture and control according to PSS method of analysis

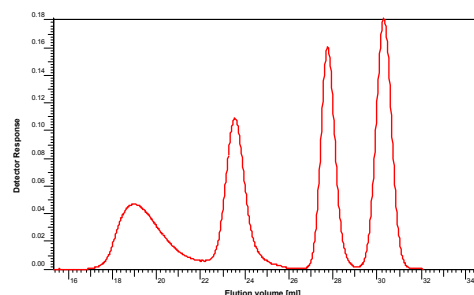
  
 Dr. T. Hofe  
 production director

Product: ReadyCal-Kit Poly(styrene) HT  
 Part No: PSS-pskitr10ht  
 Lot No: pskitr10ht-02



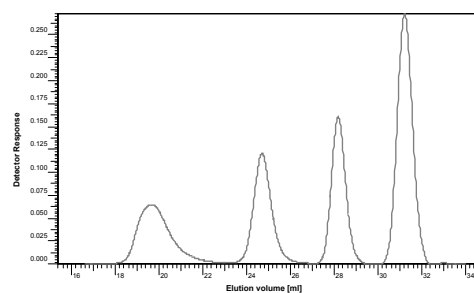
Colour code: Vial – clear / without label crimp cap – green

Mp [Da]	Mw [Da]	Mn [Da]	Mass [mg]	Lot No:
12 200 000	10 900 000	9 250 000	5.0*	ps020713
526 000	524 000	502 000	10.0	ps10128
34 800	34 000	32 700	10.0	ps9029n
3 500	3 510	3 350	10.0	ps010410



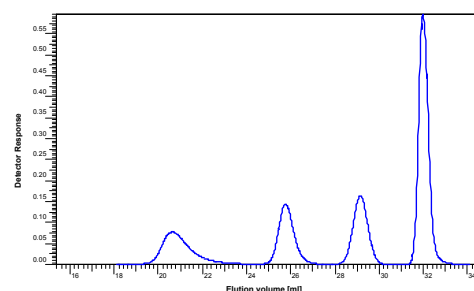
Colour code: Vial – clear / without label crimp cap – red

Mp [Da]	Mw [Da]	Mn [Da]	Mass [mg]	Lot No:
5 090 000	4 550 000	3 960 000	10.0	ps280303
250 000	248 000	236 000	10.0	ps5070
18 000	17 900	17 400	10.0	ps021210
1 820	1 920	1 770	10.0	ps200504



Colour code: Vial – clear / without label crimp cap – white

Mp [Da]	Mw [Da]	Mn [Da]	Mass [mg]	Lot No:
3 080 000	2 840 000	2 580 000	10.0	ps070312
127 000	120 000	115 000	10.0	ps10065
12 600	12 500	12 000	10.0	ps5019
672	725	662	10.0	ps11124



Colour code: Vial – clear / without label crimp cap – blue

Mp [Da]	Mw [Da]	Mn [Da]	Mass [mg]	Lot No:
1 400 000	1 310 000	1 220 000	10.0	ps16124
63 000	62 300	60 600	10.0	ps22031
5 490	5 680	5 370	10.0	ps230213
266	266	266	10.0	psp2-4

For exact determination of sample concentration, we recommend to add the solvent volume precisely.

Level of eluent	full	half	quarter
Volume of eluent	8.0 ml	4.0 ml	2.0 ml
Concentration	1.25 g/l resp. 0.625 g/l*	2.50 g/l resp. 1.25 g/l*	5.0 g/l resp. 2.50 g/l*

**Note:** It is recommended to dissolve at a maximum temperature of 80°C.