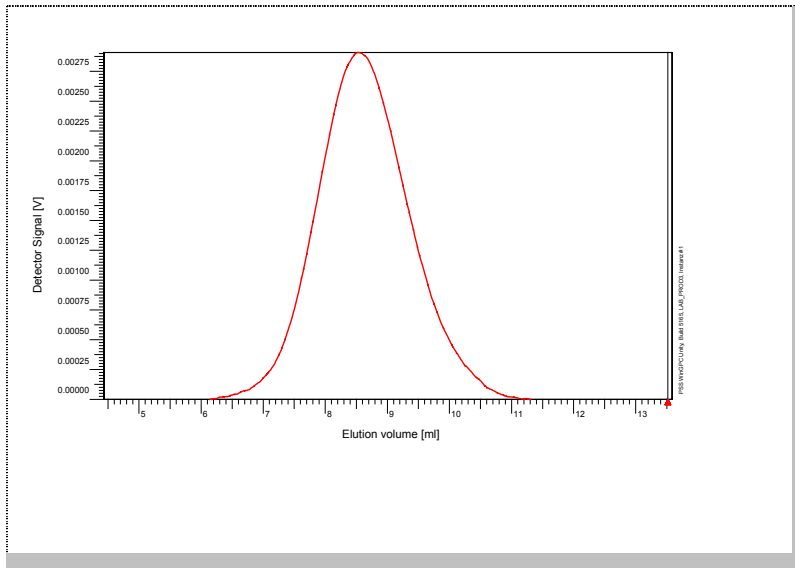


# Certificate of Analysis

Polymer type: Poly(styrene-methyl methacrylate)  
 Part No: PSS-psmm133k  
 Lot No: psmm071006

## Elugramm



## GPC/SEC – Conditions

Sample concentration	1,00 g/l	Inject volume	20 µl
Solvent	Tetrahydrofuran	Flow rate	1.00 ml/min
Precolumn [8 x 50 mm]	PSS SDV 5µm		
Columns [analytical, each 8 x 300 mm]	PSS SDV 5µm 10e3A / 10e5A / 10e6A		
Temperature	23 °C		
Data Acquisition Software	PSS WinGPC	Operator	R. Leinweber

## GPC/SEC – Results\*

Detector	Mw (total) [Da]	Mn (total) [Da]	Mp (total) [Da]	PDI (total) [Mw/Mn]
Agilent RID	133 000	84 800	118 000	1.57

\* molar mass calculation based on Poly(styrene) calibration

Copolymer - Composition	[w %]
Poly(styrene)	10
Poly(methyl methacrylate)	90

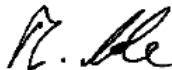
### Note:

Mw = Weight Average Molecular Weight  
 Mn = Number Average Molecular Weight  
 Mp = Molar Mass at the Peak Maximum  
 PDI = Polydispersity Index

6WRUD# Store the tightly recapped polymer standard in a dry, dark, cool area; e.g. a refrigerator (4 °C).

R  U  PPG  6ee al o product label.  
 a o approval

*Manufacture and control according to PSS method of analysis*

  
 Dr. T. Hofe  
 production director



**PSS Polymer Standards Service GmbH**  
 In der Dalheimer Wiese 5  
 55120 Mainz | Germany

**Phone** +49 6131 96239-0  
**Fax** +49 6131 96239-11  
**E-Mail** info@pss-polymer.com  
**Web** www.pss-polymer.com

**Polymer Standards Service-USA, Inc.**  
 160 Old Farm Rd, Suite A  
 Amherst | MA 01002 | USA

**Phone** +1 413 835-0265  
**Fax** +1 413 835-0354  
**E-Mail** usa@pss-polymer.com  
**Web** www.pss-polymer.com