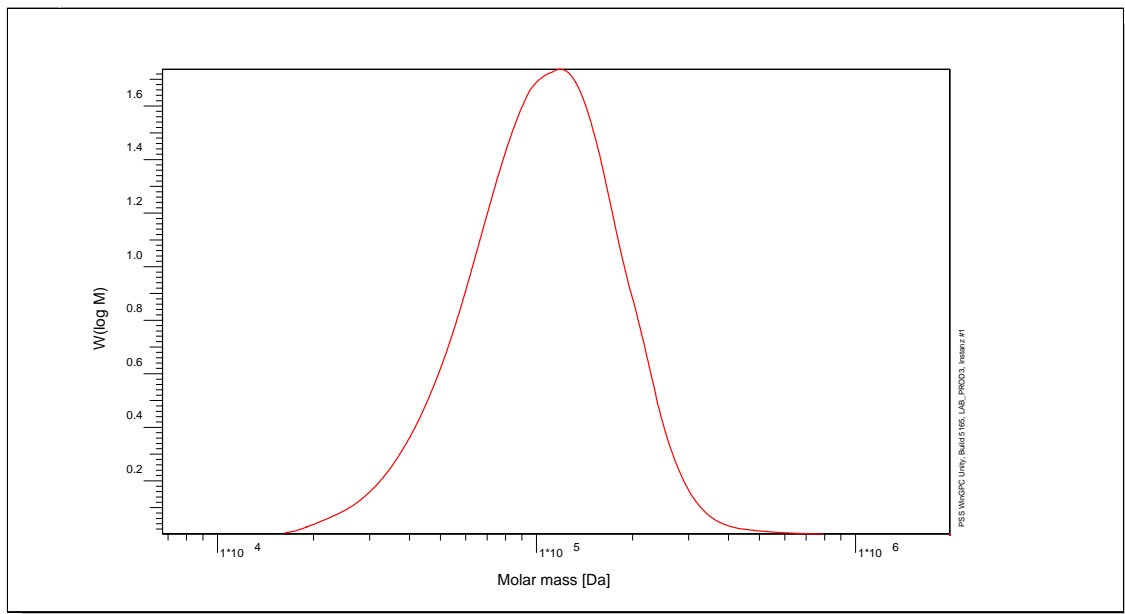


Certificate of Analysis

Polymer type: Poly(vinyl chloride)
 Part No: PSS-pvc125k
 Lot No: pvc0453

Molar Mass Distribution



GPC/SEC - Conditions

Sample concentration	1,00 g/l	Inject volume	20 µl
Solvent	Tetrahydrofuran	Flow rate	1,00 ml/min
Precolumn [8 x 50 mm]	PSS SDV 10µm	Temperature	23,0° C
Columns [analytical, each 8 x 300 mm]	PSS SDV 10µm linear XL		
Data Acquisition Software	PSS WinGPC	Operator	G. Reinhold

GPC/SEC - Results

Detector	Mw [Da]	Mn [Da]	Mp [Da]	PDI [Mw/Mn]
HP 1047A	117000	88400	119000	1,33


Note:

Mw = Weight Average Molecular Weight
 Mn = Number Average Molecular Weight
 Mp = Molar Mass at the Peak Maximum
 PDI = Polydispersity Index

Storage: Store the tightly recapped polymer standard in a dry, dark, cool area; e.g. a refrigerator (4 °C).

Date of expiry: See product label.

Manufacture control according to PSS method of analysis


 Dr. T. Hofe
 production director

