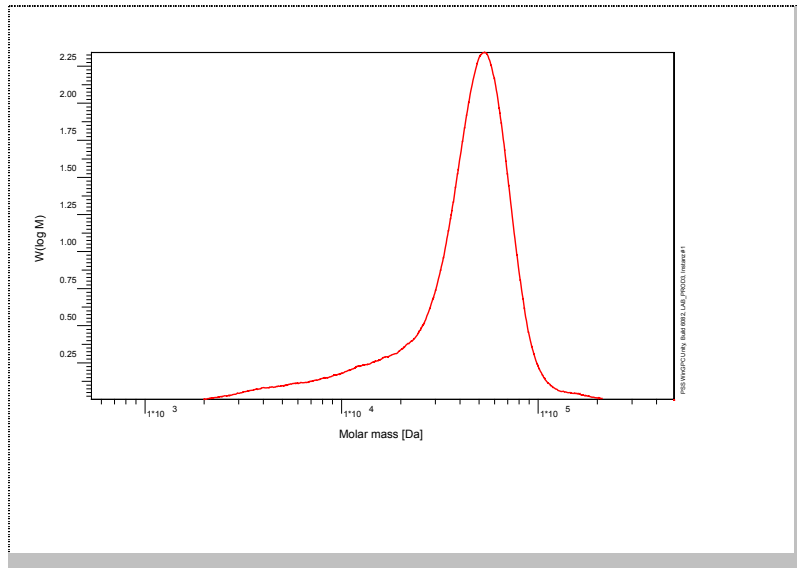


# Certificate of Analysis

Polymer type: Poly(2-vinylpyridine-b-methyl methacrylate)  
 Part No: PSS-pvpmm47k  
 Lot No: pvpmm030608

## Molar Mass Distribution



## GPC/SEC – Conditions

Sample concentration	1,00 g/l	Inject volume	20 µl
Solvent	THF, Diethylaminoethylamin 0.1Vol%	Flow rate	1.00 ml/min
Temperature	23° C		
Columns [analytical, each 8 x 300 mm]	PSS SDV 5µm 10e3Å / 10e5Å / 10e6Å		
Data Acquisition Software	PSS WinGPC	Operator	K. Oleschko

## GPC/SEC – Results\*

Detector	Mw (total) [Da]	Mn (total) [Da]	Mp (total) [Da]	PDI (total) [Mw/Mn]
Agilent RID	47 300	28 300	52 600	1.67

\* GPC/SEC – Results based on Poly(2-vinylpyridine) calibration

Copolymer - Composition	[w %]
Poly(2-vinylpyridine)	15
Poly(methyl methacrylate)	85

**Note:**

Mw = Weight Average Molecular Weight  
 Mn = Number Average Molecular Weight  
 Mp = Molar Mass at the Peak Maximum  
 PDI = Polydispersity Index

**Storage:** Store the tightly recapped polymer standard in a dry, dark, cool area; e.g. a refrigerator (4 °C).

**Date of expiry:** See product label.

Manufacture and control according to PSS method of analysis



Dr. T. Hofe  
 production director

