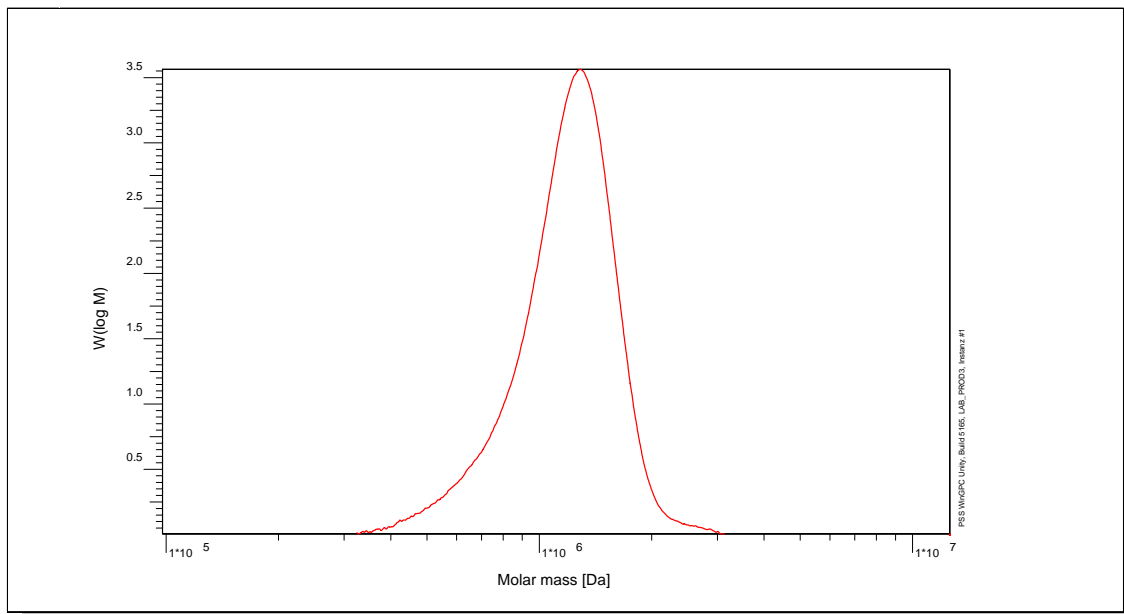


Certificate of Analysis

Polymer type: Poly(t-butyl acrylate)
 Part No: PSS-tba1.4m
 Lot No: tba3037

Molar Mass Distribution



GPC/SEC - Conditions

Sample concentration	0,60 g/l	Inject volume	20 µl
Solvent	THF	Flow rate	1,00 ml/min
Precolumn [8 x 50 mm]	PSS SDV 5µm	Temperature	23,0° C
Columns [analytical, each 8 x 300 mm]	PSS SDV 5µm 10e3Å / 10e5Å / 10e6Å	Operator	S. Fugmann
Data Acquisition Software	PSS WinGPC		

GPC/SEC - Results

Detector	Mw [Da]	Mn [Da]	Mp [Da]	PDI [Mw/Mn]
Shodex RI 71	1260000	1160000	1305000	1,09


Note:

- Mw = Weight Average Molecular Weight
- Mn = Number Average Molecular Weight
- Mp = Molar Mass at the Peak Maximum
- PDI = Polydispersity Index

Storage: Store the tightly recapped polymer standard in a dry, dark, cool area; e.g. a refrigerator (4 °C).

Date of expiry: See product label.

Manufacture and control according to PSS method of analysis


 Dr. T. Hofe
 production director

