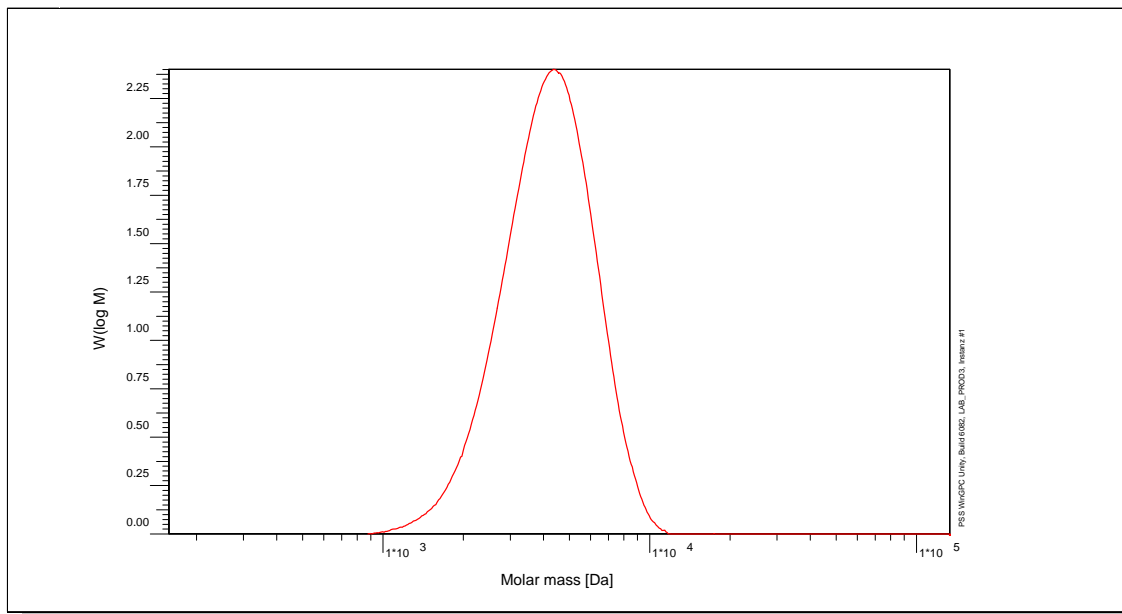


Certificate of Analysis

Polymer type: Poly(t-butyl methacrylate)
 Part No: PSS-tbma4.7k
 Lot No: tbg26109

Molar Mass Distribution



GPC/SEC - Conditions

| | | | |
|---------------------------------------|-----------------------------------|---------------|-------------|
| Sample concentration | 1,00 g/l | Inject volume | 20 µl |
| Solvent | THF | Flow rate | 1,00 ml/min |
| Precolumn [8 x 50 mm] | PSS SDV 5µm | Temperature | 23,0° C |
| Columns [analytical, each 8 x 300 mm] | PSS SDV 5µm 10e3Å / 10e5Å / 10e6Å | Operator | S. Fugmann |
| Data Acquisition Software | PSS WinGPC | | |

GPC/SEC - Results

| Detector | Mw (Da) | Mn (Da) | Mp (Da) | PDI (Mw/Mn) |
|------------|---------|---------|---------|-------------|
| Agilent RI | 4150 | 3550 | 4180 | 1,17 |


Note:

- Mw = Weight Average Molecular Weight
- Mn = Number Average Molecular Weight
- Mp = Molar Mass at the Peak Maximum
- PDI = Polydispersity Index

Storage: Store the tightly recapped polymer standard in a dry, dark, cool area; e.g. a refrigerator (4 °C).

Date of expiry: See product label.

Manufacture and control according to PSS method of analysis


 Dr. T. Hofe
 production director

