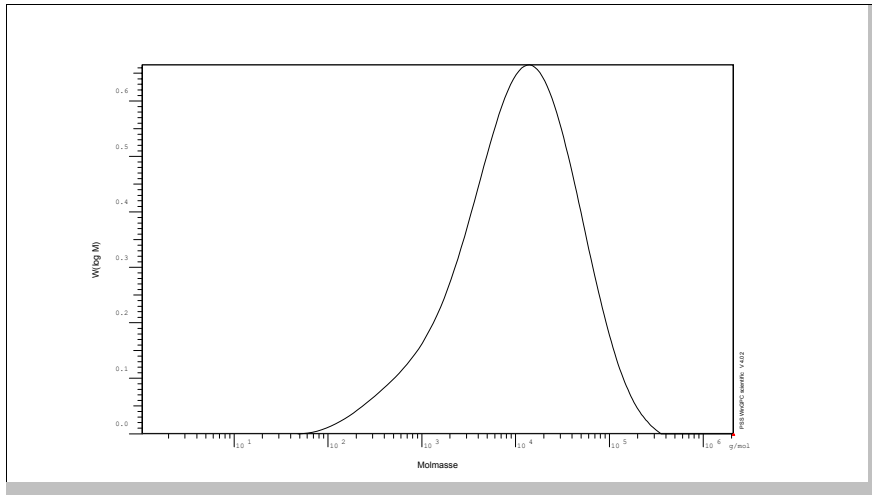


Certificate of Analysis

Polymer type: Poly(vinyl pyrrolidone) broad
 Part No: PSS-vpr22k
 Lot No: vpr22k

Molar Mass Distribution



GPC/SEC - Conditions

Sample concentration	3.00 g/l	Injection volume	20 µl
Solvent	0.1M NaNO ₃ , 20%CH ₃ CN	Flow rate	1.0 ml/min
Data Acquisition Software	PSS WinGPC		

GPC/SEC - Results

Detector	Mw [Da]	Mn [Da]	Mp [Da]	PDI [Mw/Mn]
Shodex 71	22100	3000	-	7.37


Note:

Mw = Weight average molecular weight
 Mn = Number average molecular weight
 Mp = Molar mass at the peak maximum
 PDI = Polydispersity Index

Storage: Store the tightly recapped polymer standard in a dry, dark, cool area; e.g. a refrigerator (4 °C).

Date of expiry: See product label.

Manufacture control according to PSS method of analysis


 Dr. T. Hofe
 production director

